



GT2400 ICU/CCU

Manual Sliding Doors

Where VISIBILITY meets PEACE OF MIND



Product Features and Benefits

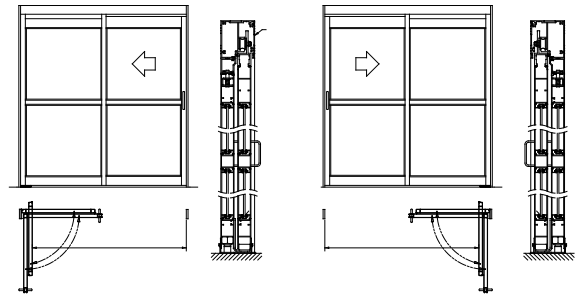
- 44 1/8" large clear door opening width for easier access (at 96" typical frame width)
- Flush bolt-free system not requiring steps to breakout
- Maintenance friendly design resolving issues against improper installations
- Smoke rated package to meet UL1784 requirements

GT2400 ICU/CCU SMOKE-RATED MANUAL SLIDING DOORS

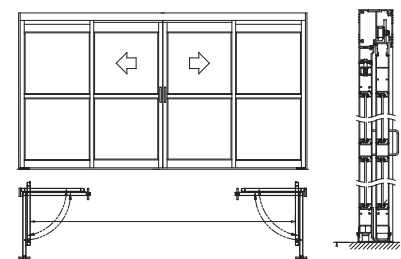
The NABCO GT2400 series provides wide room access with 44 1/8" clear door opening width (at 96" typical frame width) in a full-open breakout, and trackless-style unit. With flush bolt free system, the NABCO's new manual sliding doors are ideally suited for intensive care and cardiac-care units where large access areas are required for the trouble-free transport of beds gurneys and other medical equipment and airborne germs must be kept from spreading to other areas.

PRODUCT INFORMATION		
Model	GT2400 RH/LH	GT2400 BP
Configuration	2-Panels / Trackless	4-Panels / Trackless
Header Size (W X H)	4 1/2" X 5"	
Package Width	65" - 108"	120" - 192"
Clear Door Opening Width	28 3/4" - 50 1/8"	57 1/4" - 89"
Standard Finish	Clear (204) or Dark Bronze (313) Anodized	
STANDARD FEATURES		
4" Bottom Rails	2 1/8" Narrow Stiles	3/4" x 4-1/2" Jamb
2" Muntin	Vinyl Weathering	
AVAILABLE OPTIONS		
UL1784 Smoke Package, Positive Latch, 5", 6-1/2" or 10" Bottom Rails		
1 3/4" x 4 1/2" Jamb, 4" Medium Stiles, 4", 6-3/8", 8" Muntins, Finishes		

GT2400 LH (Single) GT2400 RH (Single)



GT2400 BP (Bi-part)



SELECTION GUIDE (Typical Package Dimensions)				
FRAME WIDTH	DOOR OPENING	BREAKOUT OPENING	DOOR PANEL	SIDELITE PANEL
GT2400 SINGLE SLIDE FULL OPEN TRACKLESS				
84" (2134)	38.15" (969)	77.625" (1965)	43.375" (1102)	41" (1041)
96" (2438)	44.15" (1121)	89.625" (2270)	49.375" (1254)	47" (1194)
102" (2591)	47.15" (1198)	95.625" (2423)	52.375" (1330)	50" (1270)
108" (2743)	50.15" (1274)	101.625" (2575)	55.375" (1407)	53" (1346)
GT2400 BIPART SLIDE FULL OPEN TRACKLESS				
120" (3048)	53.05" (1347)	108.75" (2762)	31.75" (806)	29.375" (746)
144" (3658)	65.05" (1652)	132.75" (3372)	37.75" (959)	35.375" (899)
168" (4267)	77.05" (1957)	156.75" (1957)	43.75" (1111)	41.375" (1051)
192" (4877)	89.05" (2262)	180.75" (4591)	49.75" (1264)	47.375" (1203)

NABCO Service and Specifications

Along with NABCO factory branches, NABCO has the largest independently owned network of automatic door distributors in North America. Their friendly, qualified installers and technicians always strive to exceed your expectations from install to after-sales service. NABCO's factory branches and independent distributors provide AAADM-certified technicians to ensure your doors meet all ANSI A156.10 standards. Specifications and CAD drawings are available on the NABCO website.



Member of Nabtesco Group

NABCO ENTRANCES INC.

582 W18717 Gemini Drive | Muskego, WI 53150 | 877-622-2694 | Fax

888-679-3319 www.NABCOentrances.com | Email info@NABCOentrances.com

Distributed by: