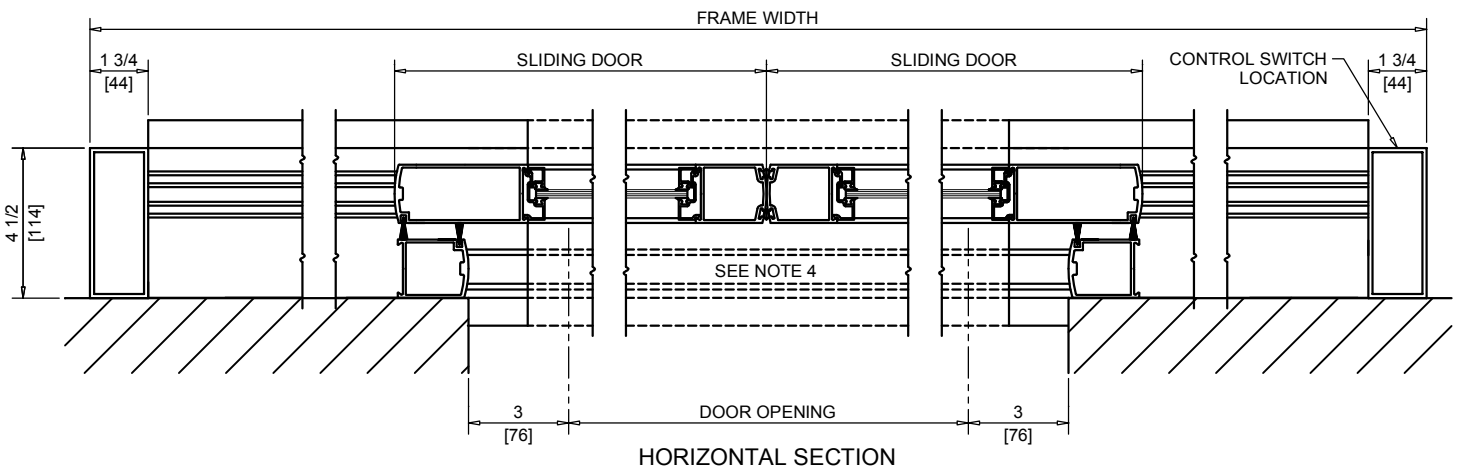
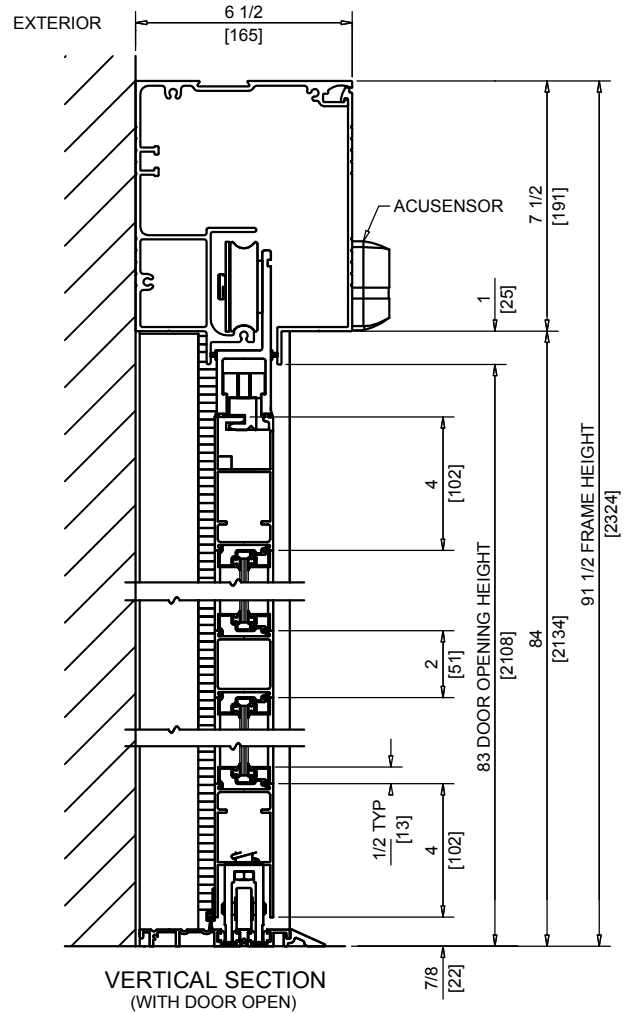
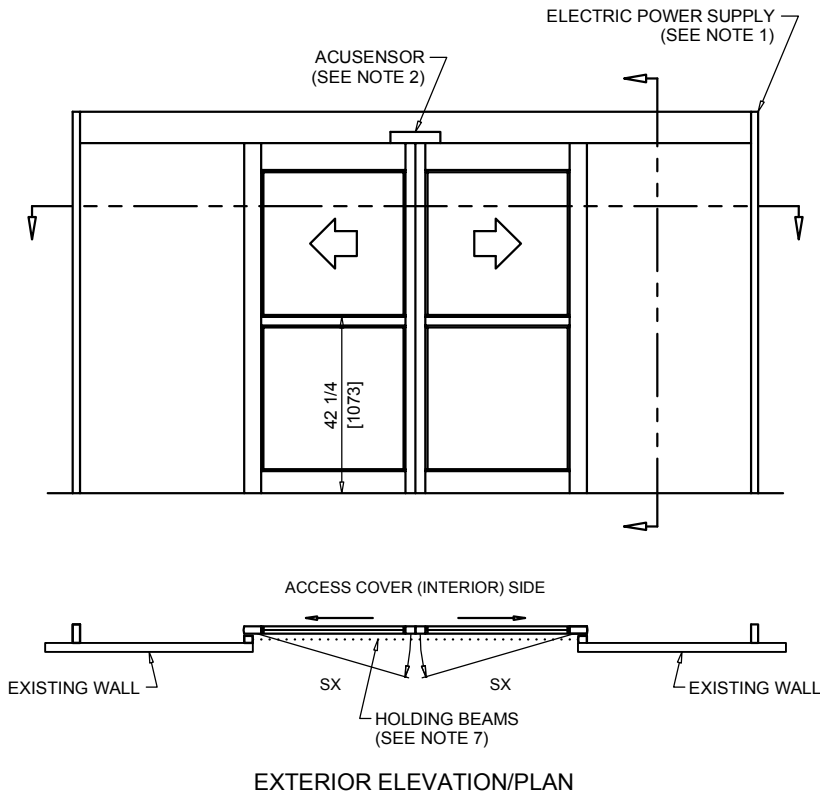




NABCO Entrances Inc.  
 S82 W18717 Gemini Drive Muskego, WI 53150  
 www.nabcoentrances.com 1-877-622-2694

JOB NAME: \_\_\_\_\_  
 LOCATION: \_\_\_\_\_  
 DISTRIBUTOR: \_\_\_\_\_  
 DOOR #: \_\_\_\_\_ DATE: \_\_\_\_\_  
 SHEET \_\_\_\_\_ OF \_\_\_\_\_

**WHISPER SLIDE**  
**GT1175-08I**  
 BI-PART SLIDE  
 FULL OPEN  
 SURFACE APPLIED  
 TO INTERIOR



**NOTES:**

1. POWER TO HEADER WILL BE 115VAC, 5 AMP PER OPERATOR PROVIDED BY ELECTRICAL CONTRACTOR.
2. ONE ACUSENSOR IS MOUNTED AND ONE IS SHIPPED LOOSE.
3. STANDARD LOCATION OF LOCK IS 35" FROM FINISH FLOOR TO CENTERLINE OF KEY CYLINDER.
4. THRESHOLD THROUGH DOOR OPENING (AS SHOWN WITH DASHED LINES) IS OPTIONAL.
5. DOOR FRAME SIZED BY MASONRY OPENING.
6. DOOR CAN ONLY BREAK OUT IN THE FULLY CLOSED POSITION.
7. THREE SETS OF HOLDING BEAMS STANDARD. ONE SET LOCATED AT 21" AFF, ONE SET AT 51" AFF AND ONE SET LOCATED 12" FROM TOP OF HEADER.

DOOR OPENING	FULL BREAKOUT OPENING	FRAME WIDTH	SLIDING DOOR	SIDELITE
48" [1219]	50" [1270]	10'-0" [3048]	29 1/4" [743]	31 1/16" [789]
60" [1524]	62" [1575]	12'-0" [3658]	35 1/4" [895]	37 1/16" [941]
72" [1829]	74" [1880]	14'-0" [4267]	41 1/4" [1048]	43 1/16" [1094]
84" [2134]	86" [2184]	16'-0" [4877]	47 1/4" [1200]	49 1/16" [1246]
96" [2438]	98" [2489]	18'-0" [5486]	53 1/4" [1353]	55 1/16" [1399]