

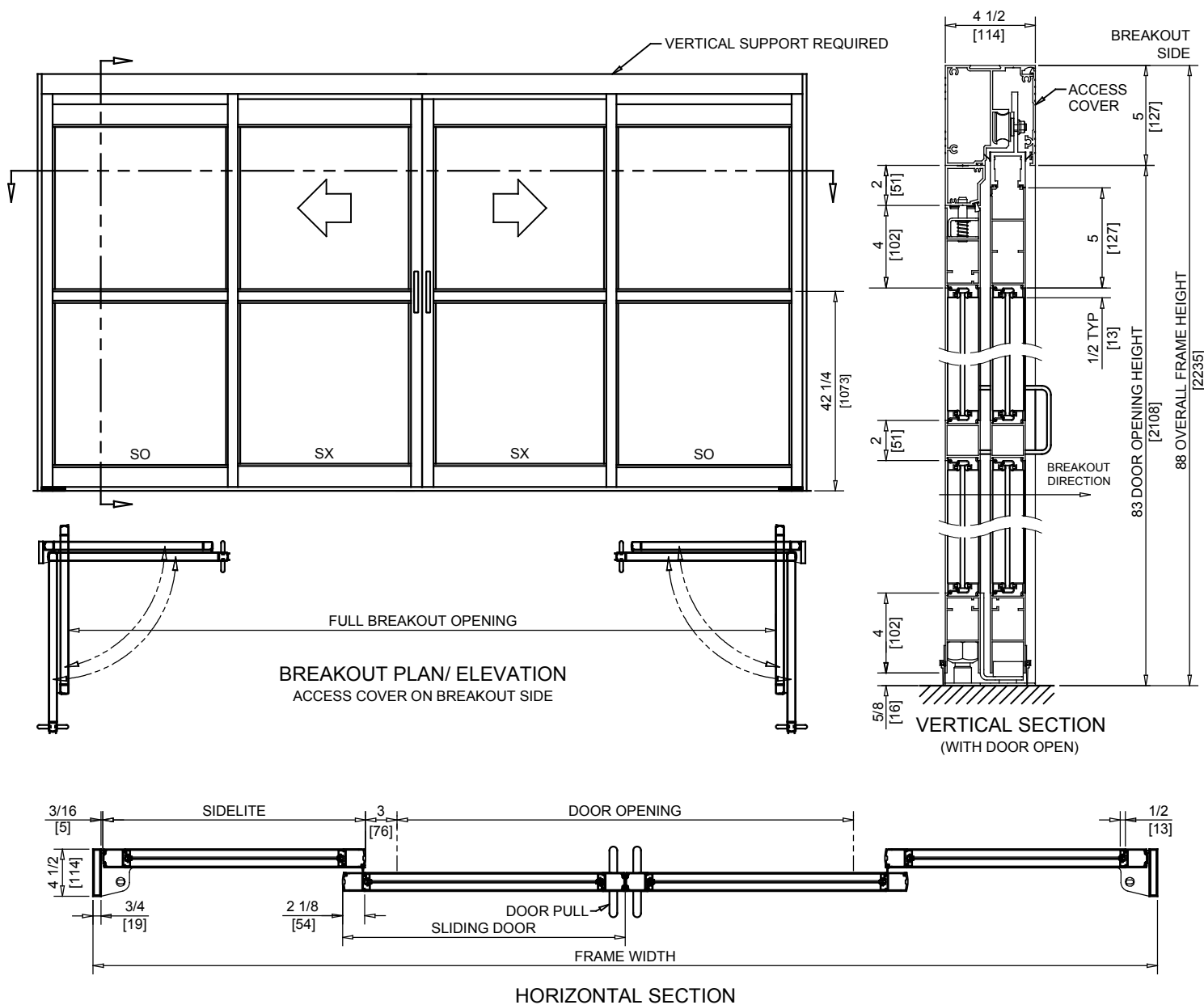


JOB NAME: _____
LOCATION: _____
DISTRIBUTOR: _____
DOOR #: _____ **DATE:** _____
SHEET _____ **OF** _____

GT2400BP

NABCO Entrances Inc.
 S82 W18717 Gemini Drive Muskego, WI 53150
 www.nabcoentrances.com 1-877-622-2694

**BIPART
 FULL OPEN
 TRACKLESS**



NOTES:

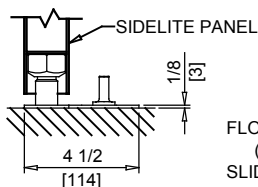
- NO FLOOR TRACK TO INTERFERE WITH TRAFFIC.
- BREAKOUT ONLY FROM FULL OPEN POSITION.
- UNITS ARE HANDED FROM BREAKOUT SIDE.
- ROUGH OPENING EQUALS FRAME WIDTH +1/2" AND FRAME HEIGHT +1/4".

STANDARD PACKAGE :

- STANDARD FINISH (204 CLEAR OR 313 DARK BRONZE ANODIZED)
- NARROW STILES (2 1/8")
- 1/2" TALL GLASS STOPS FOR 1/4" GLASS
- 2" MUNTIN 42 1/4" FROM FINISHED FLOOR
- 4" BOTTOM RAILS
- 3/4" X 4 1/2" JAMBS
- VINYL WEATHERING

AVAILABLE OPTIONS

- SPECIAL FINISHES
- MEDIUM STILES (4") *
- ALTERNATIVE GLASS SIZES UP TO 1" THICK
- NO MUNTIN AND LARGER SIZE MUNTINS AVAILABLE
- 6 1/2" & 10" BOTTOM RAILS
- 1 3/4" X 4 1/2" SLICK AND POCKETED JAMBS *
- TRANSOM WITH 0-3 VERTICALS



FLOOR MOUNTED PIVOT ASSEMBLY
 (VIEWED FROM PIVOT JAMB.
 SLIDE PANEL NOT SHOWN FOR CLARITY)

FRAME WIDTH	DOOR OPENING	FULL BREAKOUT OPENING	DOOR PANEL	SIDELITE PANEL
120" [3048]	53.05" [1347]	108.75" [2762]	31.75" [806]	29.375" [746]
144" [3658]	65.05" [1652]	132.75" [3372]	37.75" [959]	35.375" [899]
168" [4267]	77.05" [1957]	156.75" [3981]	43.75" [1111]	41.375" [1051]
192" [4877]	89.05" [2262]	180.75" [4591]	49.75" [1264]	47.375" [1203]

* THESE OPTIONS WILL REDUCE THE CLEAR DOOR OPENING