

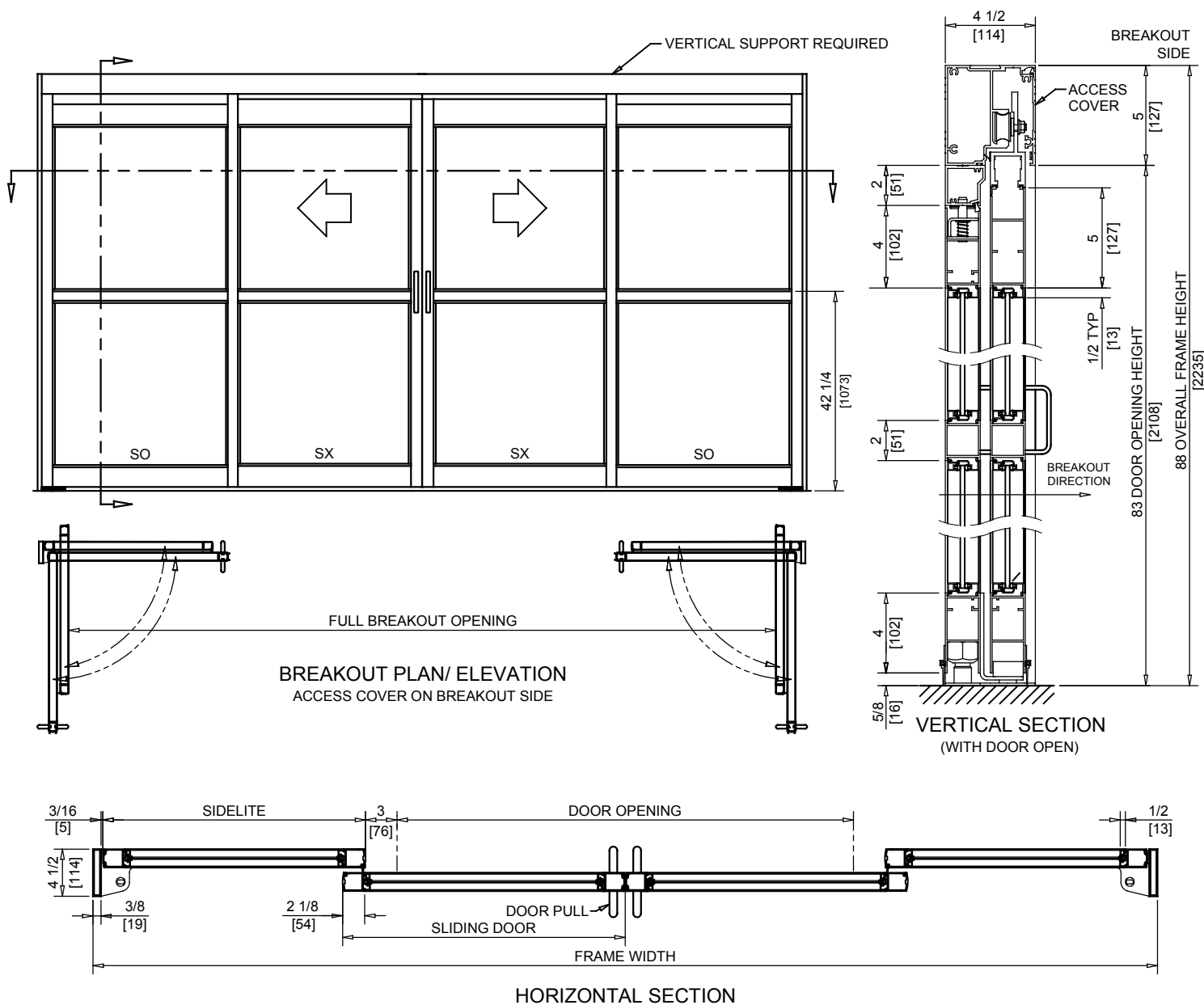


NABCO Entrances Inc.
 S82 W18717 Gemini Drive Muskego, WI 53150
 www.nabcoentrances.com 1-877-622-2694

JOB NAME: _____
 LOCATION: _____
 DISTRIBUTOR: _____
 DOOR #: _____ DATE: _____
 SHEET ____ OF ____

GT2400BP

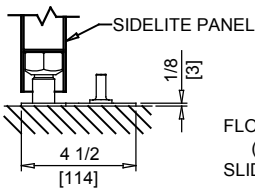
**BIPART
 FULL OPEN
 TRACKLESS**



NOTES:
 NO FLOOR TRACK TO INTERFERE WITH TRAFFIC.
 BREAKOUT ONLY FROM FULL OPEN POSITION.
 UNITS ARE HANDED FROM BREAKOUT SIDE.
 ROUGH OPENING EQUALS FRAME WIDTH +1/2" AND FRAME HEIGHT +1/4".

- STANDARD PACKAGE :**
- STANDARD FINISH (204 CLEAR OR 313 DARK BRONZE ANODIZED)
 - NARROW STILES (2 1/8")
 - 1/2" TALL GLASS STOPS FOR 1/4" GLASS
 - 2" MUNTIN 42 1/4" FROM FINISHED FLOOR
 - 4" BOTTOM RAILS
 - 3/4" X 4 1/2" JAMBS
 - VINYL WEATHERING

- AVAILABLE OPTIONS**
- SPECIAL FINISHES
 - MEDIUM STILES (4") *
 - ALTERNATIVE GLASS SIZES UP TO 1" THICK
 - NO MUNTIN AND LARGER SIZE MUNTINS AVAILABLE
 - 6 1/2" & 10" BOTTOM RAILS
 - 1 3/4" X 4 1/2" SLICK AND POCKETED JAMBS *
 - TRANSOM WITH 0-3 VERTICALS



FLOOR MOUNTED PIVOT ASSEMBLY
 (VIEWED FROM PIVOT JAMB.
 SLIDE PANEL NOT SHOWN FOR CLARITY)

FRAME WIDTH	FULL BREAKOUT OPENING	DOOR OPENING	SLIDING DOOR	SIDELITE
120" [3048]	108.75" [2762]	53.05" [1347]	31.75" [806]	29.375" [746]
144" [3658]	132.75" [3372]	65.05" [1652]	37.75" [959]	35.375" [899]
168" [4267]	156.75" [3981]	77.05" [1957]	43.75" [1111]	41.375" [1051]
192" [4877]	180.75" [4591]	89.05" [2262]	49.75" [1264]	47.375" [1203]

* THESE OPTIONS WILL REDUCE THE CLEAR DOOR OPENING