

GT20 Swing Door - Order form

Rev. 2019

Quote: _____ Page: _____ of _____
 Company: _____ Distributor #: _____ Door #: _____
 Date: _____ Job Name: _____
 PO #: _____ Contact: _____
 Drop Ship to: _____
 Ship Method: _____ Date to Ship: _____

Notes:

Include decal packet for:

_____ Full Auto _____ Low Energy

Type of Header:

_____ Low Profile CU, Single, Pt # GT20-0100
 _____ Low Profile CU, Sim Pair, Pt # GT20-0101

Header heights: _____ Low Profile = 3-3/4"

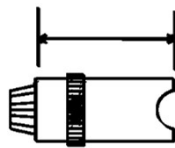
Arms and Tracks

_____ Outswing Arm & Shoe
 _____ Inswing Arm and Track
 _____ Reveal (back of operator to face of door)
 Arm and Track can be used as follows:
Interior door: outswing or inswing
Exterior door: inswing only

_____ M-01791 Inswing Arm
 Must be used on Inswing Units with
 Reveals between 0" - 5"

Alternate spindle extensions:

_____ Pt # V-00513
 Length: 1.4" (36mm)
 _____ Pt # V-00407
 Length: 2.2" (56mm)
 _____ Pt # V-00408
 Length: 3.4" (86mm)



Door Pivot:

_____ Butt & Hinge _____ Center Pivot
 _____ Jamb Size 1-3/4" _____ Other
 Send Sketch for Center Post Application

Finish:

_____ Clear (204) _____ Paint/Clad
 _____ Dark bronze (313) _____ Special anod
 _____ Prep for paint by distributor

Additional Sensors:

_____ Acusensor M Presence Sensor Pt # A-01306
 _____ Reaction Two Pt # V-00173
 _____ OA Edge1 Sensor, w/One Module Pt # V-00224
 _____ OA Edge2 Sensor, w/Two Modules Pt # V-00163

Plug in Relay Board:

_____ Provides 4 independent relay outputs
 Pt # V-00326

Mode Selector Switch

_____ Change from header mounted
 mode switch to jamb mounted
 (applies to conversion unit only)

Total Header Length

_____ inches
 (= Door Opening Width + 1.75" overlap each side)

Optional Swing Door Leaf and Frame:

Door Panel Accessories:

_____ Push Bar & Pull Handle (standard)
 _____ Push Bar Both Sides
 _____ Panic Hardware
 _____ No muntins required
 _____ Glass Thickness (1/4", 1", other)

Swing Door Size:

_____ Width _____ Narrow Stile (2-1/8")
 _____ Height _____ Medium Stile (4")
 _____ Muntin Bar (optional)
 _____ 2" _____ 4"
 _____ Special _____

Frame:

_____ Header Height (91" Side Load)
 _____ Height Including Transom
 _____ Threshold _____ Width

*** Raising the arm could prevent it from clearing
 frame mounted door stops located on the
 underside of the frame