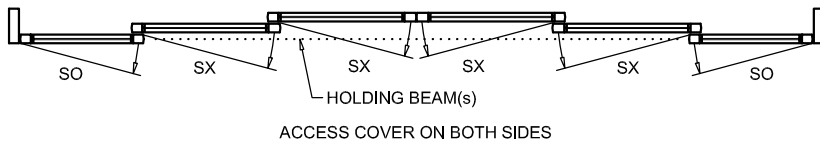
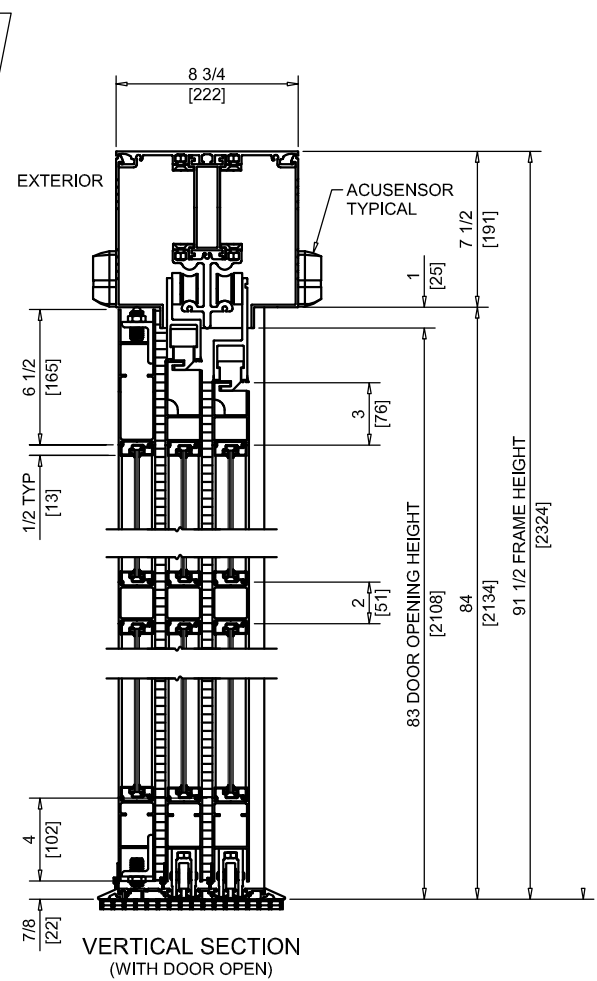
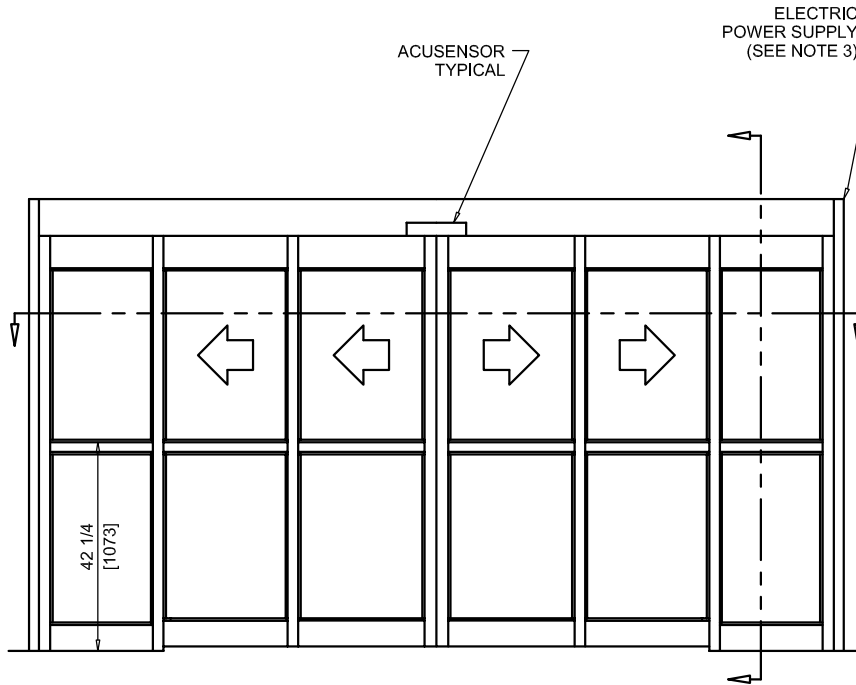




NABCO Entrances Inc.  
 S82 W18717 Gemini Drive Muskego, WI 53150  
 www.nabcoentrances.com 1-877-622-2694

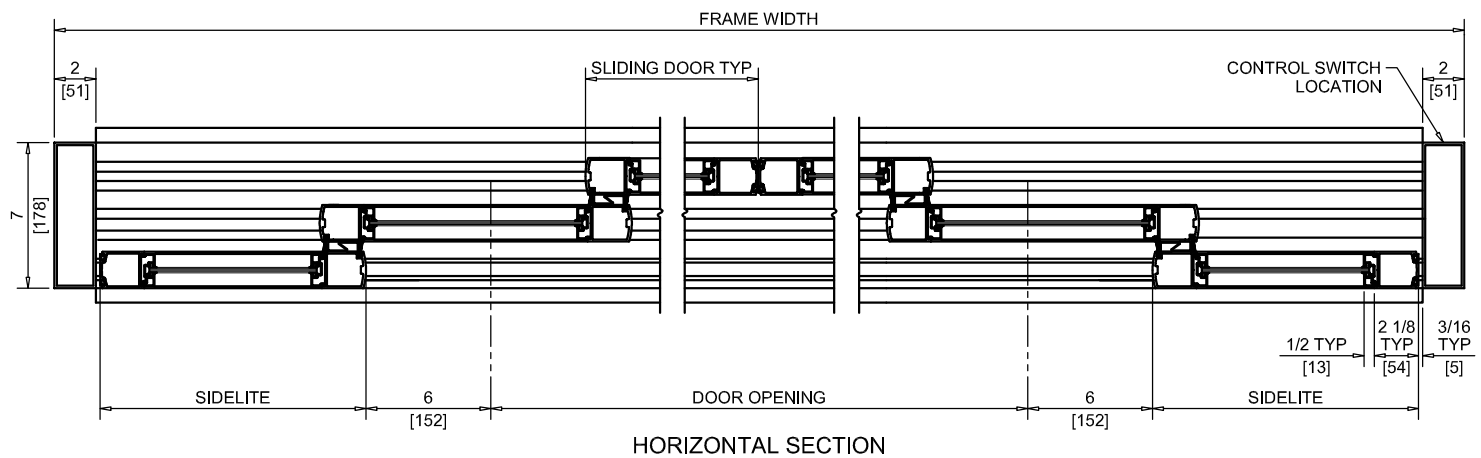
JOB NAME: \_\_\_\_\_  
 LOCATION: \_\_\_\_\_  
 DISTRIBUTOR: \_\_\_\_\_  
 DOOR #: \_\_\_\_\_ DATE: \_\_\_\_\_  
 SHEET \_\_\_\_\_ OF \_\_\_\_\_

**WHISPER SLIDE**  
**GT1175-17**  
 BI-PART SLIDE  
 FULL OPEN  
 TELESCOPING  
 NO TRANSOM



EXTERIOR ELEVATION/PLAN

VERTICAL SECTION  
 (WITH DOOR OPEN)



HORIZONTAL SECTION

NOTES:

1. POWER TO HEADER WILL BE 115VAC, 5 AMP PER OPERATOR PROVIDED BY ELECTRICAL CONTRACTOR.
2. STANDARD LOCATION OF LOCK IS 35" FROM FINISH FLOOR TO CENTERLINE OF KEY CYLINDER.
3. 1/2" THRESHOLD THROUGH DOOR OPENING IS REQUIRED.
4. MASONRY OPENING EQUALS FRAME WIDTH +1/2" AND FRAME HEIGHT +1/4".
5. ONE SET OF HOLDING BEAMS AT 21" AFF STANDARD. SECOND SET AT 51" AFF IS OPTIONAL.

	DOOR OPENING	FULL BREAKOUT OPENING	FRAME WIDTH	SLIDING DOOR	SIDELITE
MIN.	48 5/8" [1235]	79 1/2" [2019]	7'-11 1/2" [2425]	17 7/16" [443]	15 1/4" [387]
MAX.	113" [2870]	176" [4470]	16'-0" [4876]	33 1/2" [851]	31 5/16" [795]