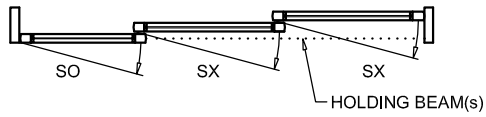
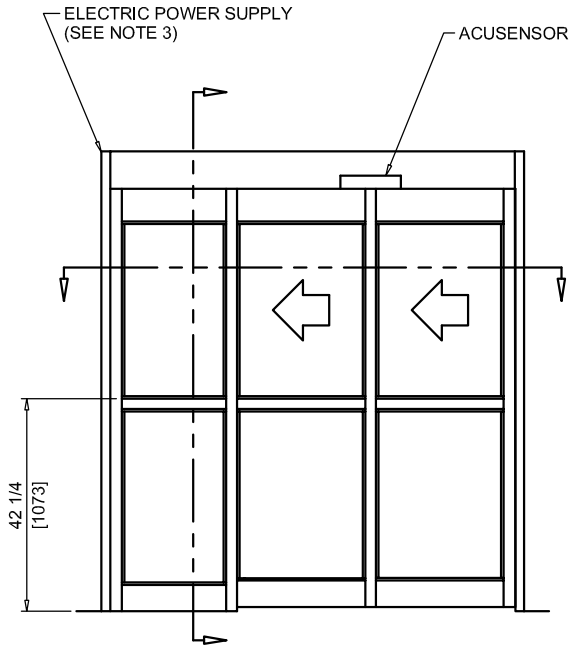




NABCO Entrances Inc.  
 S82 W18717 Gemini Drive Muskego, WI 53150  
 www.nabcoentrances.com 1-877-622-2694

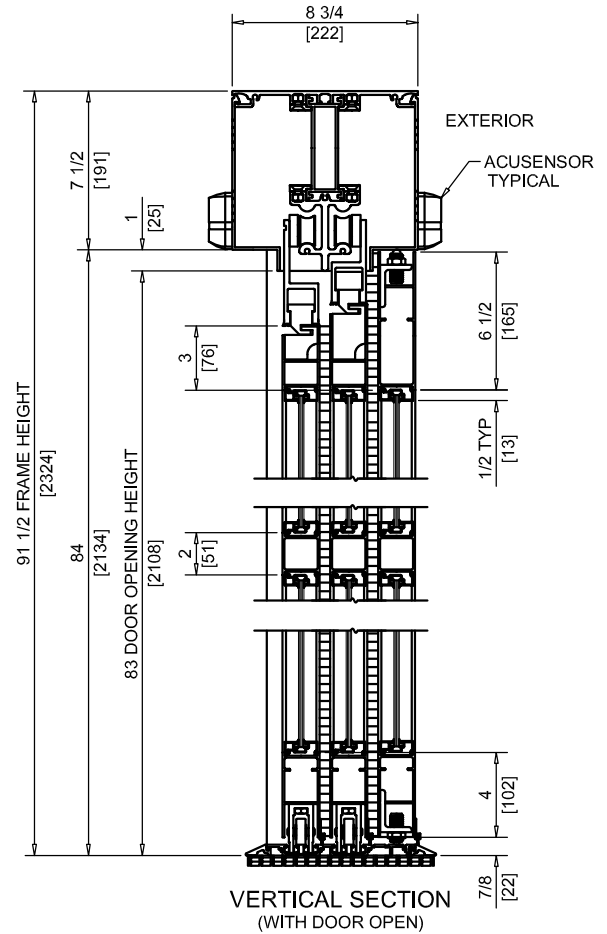
JOB NAME: \_\_\_\_\_  
 LOCATION: \_\_\_\_\_  
 DISTRIBUTOR: \_\_\_\_\_  
 DOOR #: \_\_\_\_\_ DATE: \_\_\_\_\_  
 SHEET \_\_\_\_ OF \_\_\_\_

**WHISPER SLIDE**  
**GT1175-16L**  
 SINGLE SLIDE  
 LEFT HAND  
 FULL OPEN  
 TELESCOPING

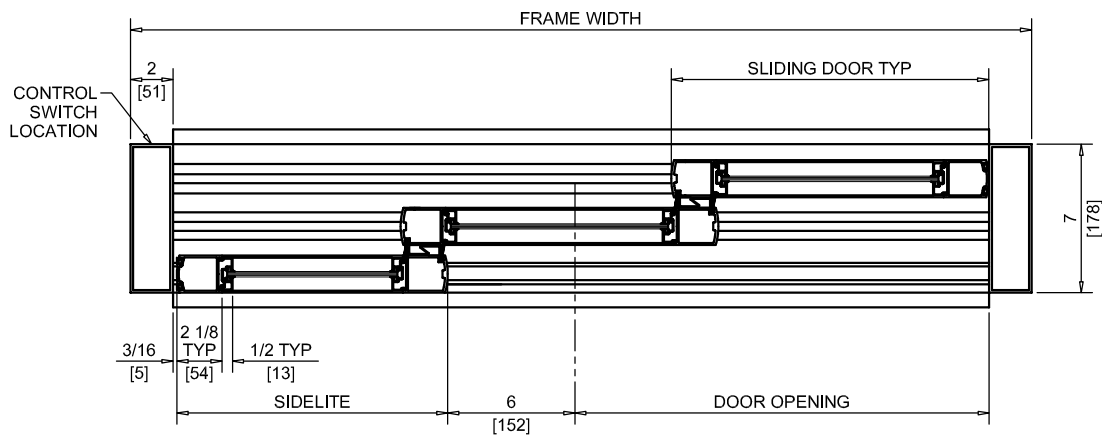


ACCESS COVER ON BOTH SIDES

EXTERIOR ELEVATION/PLAN



VERTICAL SECTION  
 (WITH DOOR OPEN)



HORIZONTAL SECTION

NOTES:

- POWER TO HEADER WILL BE 115VAC, 5 AMP PER OPERATOR PROVIDED BY ELECTRICAL CONTRACTOR.
- STANDARD LOCATION OF LOCK IS 35" FROM FINISH FLOOR TO CENTERLINE OF KEY CYLINDER.
- 1/2" THRESHOLD THROUGH DOOR OPENING IS REQUIRED.
- MASONRY OPENING EQUALS FRAME WIDTH + 1/2" AND FRAME HEIGHT + 1/4".
- ONE SET OF HOLDING BEAMS AT 21" AFF STANDARD. SECOND SET AT 51" AFF IS OPTIONAL.

	DOOR OPENING	FULL BREAKOUT OPENING	FRAME WIDTH	SLIDING DOOR	SIDELITE
MIN.	32 1/8" [816]	51 1/2" [1308]	5'-1 1/2" [1562]	21 3/8" [543]	19 3/16" [487]
MAX.	87 1/8" [2213]	134" [3404]	12'-0" [3657]	48 7/8" [1241]	46 11/16" [1186]