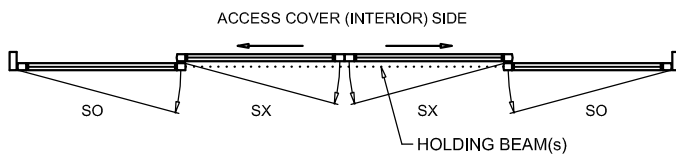
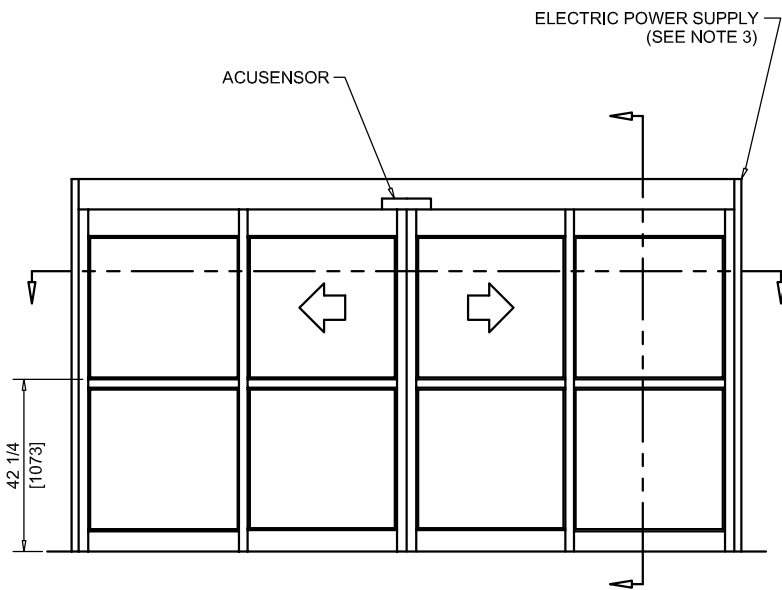




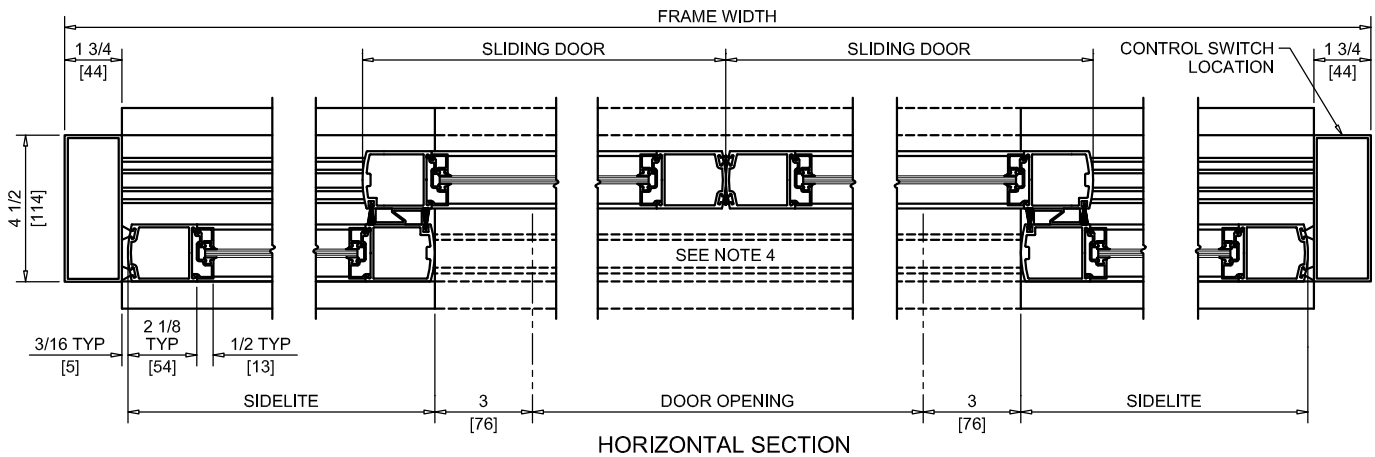
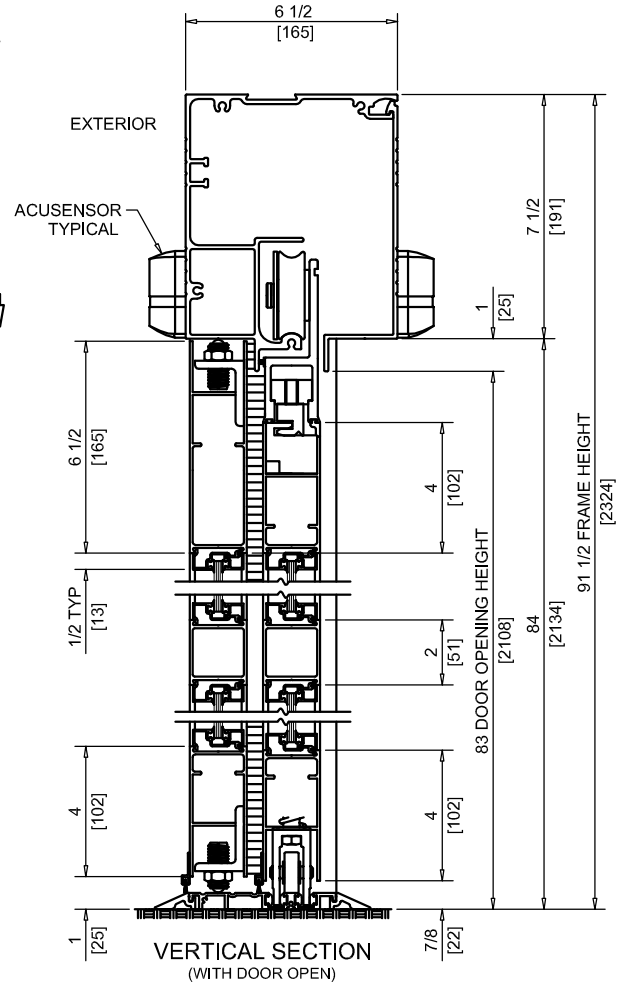
NABCO Entrances Inc.
 582 W18717 Gemini Drive Muskego, WI 53150
 www.nabcoentrances.com 1-877-622-2694

JOB NAME: _____
 LOCATION: _____
 DISTRIBUTOR: _____
 DOOR #: _____ DATE: _____
 SHEET _____ OF _____

WHISPER SLIDE
GT1175-04
 BI-PART SLIDE
 FULL OPEN
 NO TRANSOM



EXTERIOR ELEVATION/PLAN



DOOR OPENING	FULL BREAKOUT OPENING	FRAME WIDTH	SLIDING DOOR	SIDELITE
48" [1219]	104" [2642]	10'-0" [3048]	29 1/4" [743]	31 1/16" [789]
60" [1524]	128" [3251]	12'-0" [3658]	35 1/4" [895]	37 1/16" [941]
72" [1829]	152" [3861]	14'-0" [4267]	41 1/4" [1048]	43 1/16" [1094]
84" [2134]	176" [4470]	16'-0" [4877]	47 1/4" [1200]	49 1/16" [1246]
96" [2438]	200" [5080]	18'-0" [5486]	53 1/4" [1353]	55 1/16" [1399]

NOTES:

- POWER TO HEADER WILL BE 115VAC, 5 AMP PER OPERATOR PROVIDED BY ELECTRICAL CONTRACTOR.
- STANDARD LOCATION OF LOCK IS 35" FROM FINISH FLOOR TO CENTERLINE OF KEY CYLINDER.
- THRESHOLD THROUGH DOOR OPENING (AS SHOWN WITH DASHED LINES) IS OPTIONAL.
- MASONRY OPENING EQUALS FRAME WIDTH +1/2" AND FRAME HEIGHT +1/4".
- ONE SET OF HOLDING BEAMS AT 21" AFF STANDARD. SECOND SET AT 51" AFF IS OPTIONAL.