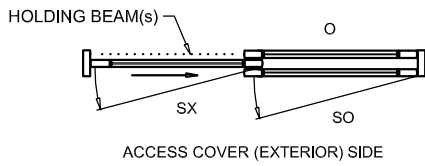
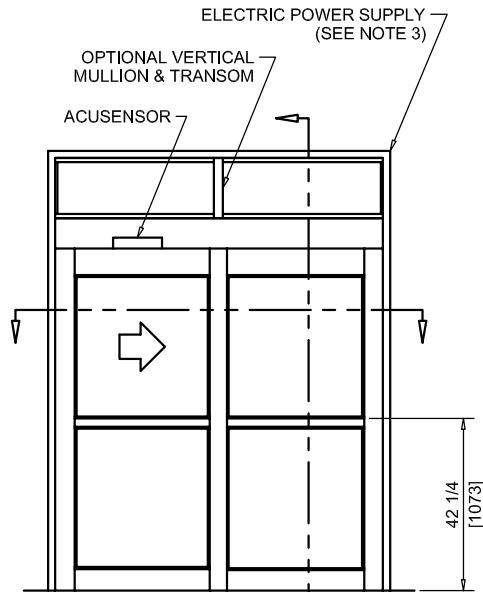




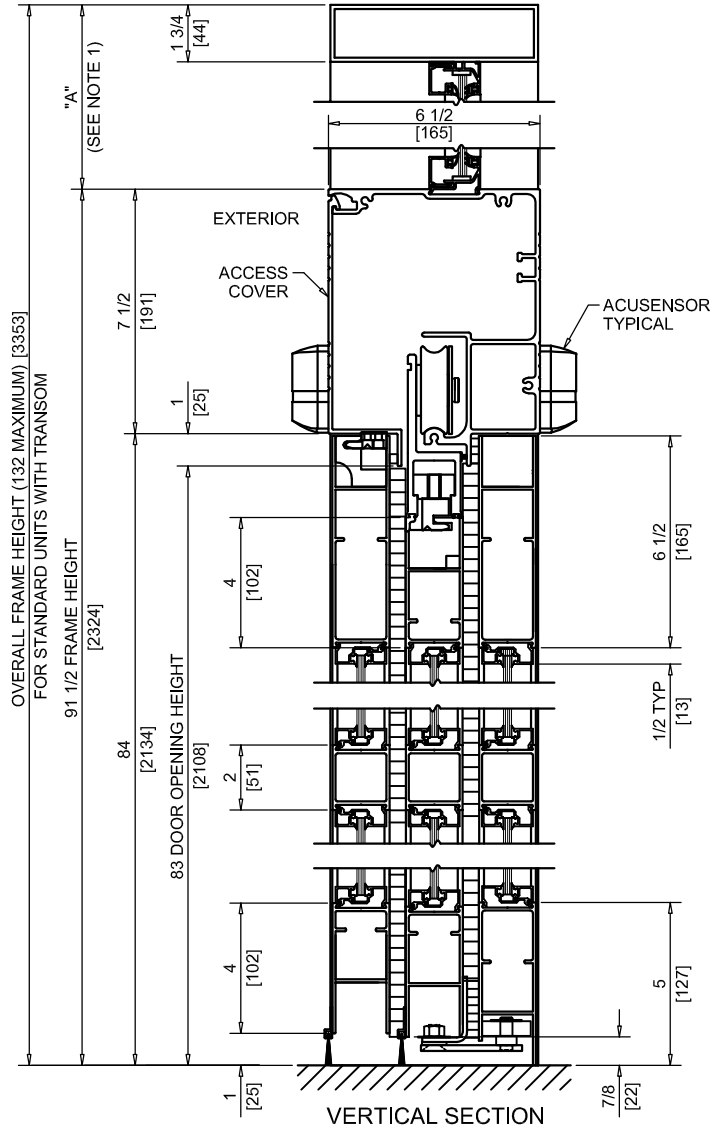
NABCO Entrances Inc.  
 S82 W18717 Gemini Drive Muskego, WI 53150  
 www.nabcoentrances.com 1-877-622-2694

JOB NAME: \_\_\_\_\_  
 LOCATION: \_\_\_\_\_  
 DISTRIBUTOR: \_\_\_\_\_  
 DOOR #: \_\_\_\_\_ DATE: \_\_\_\_\_  
 SHEET \_\_\_\_\_ OF \_\_\_\_\_

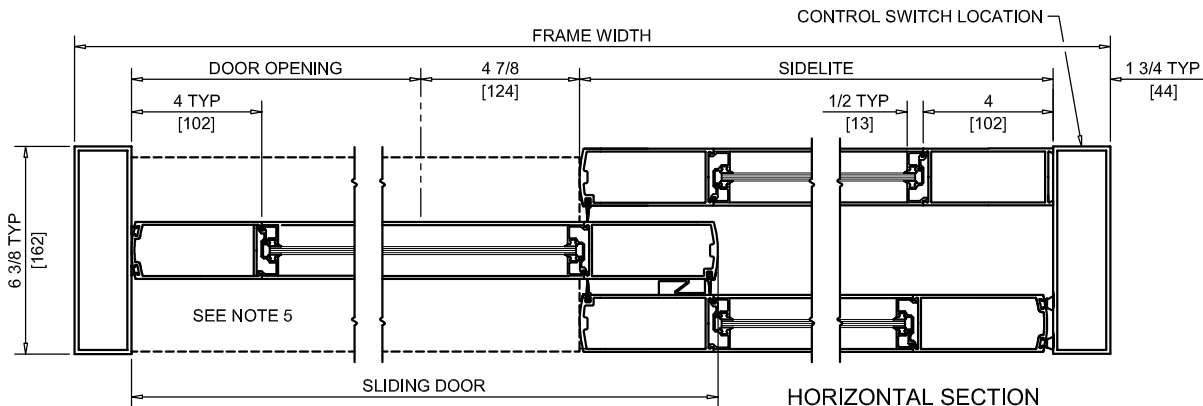
**WHISPER SLIDE  
 GT1175-18RM**  
 SINGLE SLIDE  
 RH FIXED  
 POCKETED  
 MEDIUM STILE



EXTERIOR ELEVATION/PLAN



VERTICAL SECTION



HORIZONTAL SECTION

**MEDIUM STILE**

NOTES:

1. TRANSOM HEIGHT (DIMENSION "A") IS DETERMINED PER JOB REQUIREMENTS.
2. TRANSOM GLAZING IS SURFACE APPLIED FOR ALL GLASS THICKNESSES.
3. POWER TO HEADER WILL BE 115VAC, 5 AMP PER OPERATOR PROVIDED BY ELECTRICAL CONTRACTOR.
4. STANDARD LOCATION OF LOCK IS 35" FROM FINISH FLOOR TO CENTERLINE OF KEY CYLINDER.
5. 1/4 X 7 THRESHOLD THROUGH DOOR OPENING (AS SHOWN WITH DASHED LINES) IS OPTIONAL.
6. MASONRY OPENING EQUALS FRAME WIDTH +1/2" AND FRAME HEIGHT +1/4".
7. ONE SET OF HOLDING BEAMS AT 21" AFF STANDARD. SECOND SET AT 51" AFF IS OPTIONAL.

DOOR OPENING	FULL BREAKOUT OPENING	FRAME WIDTH	SLIDING DOOR	SIDELITE
34 1/8" [867]	39" [991]	7'-0" [2134]	43 1/8" [1095]	41 1/2" [1054]
40 1/8" [1019]	45" [1143]	8'-0" [2438]	49 1/8" [1248]	47 1/2" [1207]
43 1/8" [1095]	48" [1219]	8'-6" [2591]	52 1/8" [1324]	50 1/2" [1283]
46 1/8" [1172]	51" [1295]	9'-0" [2743]	55 1/8" [1400]	53 1/2" [1359]