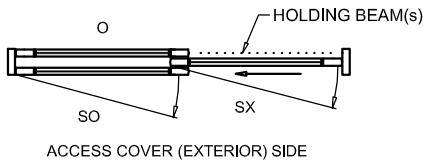
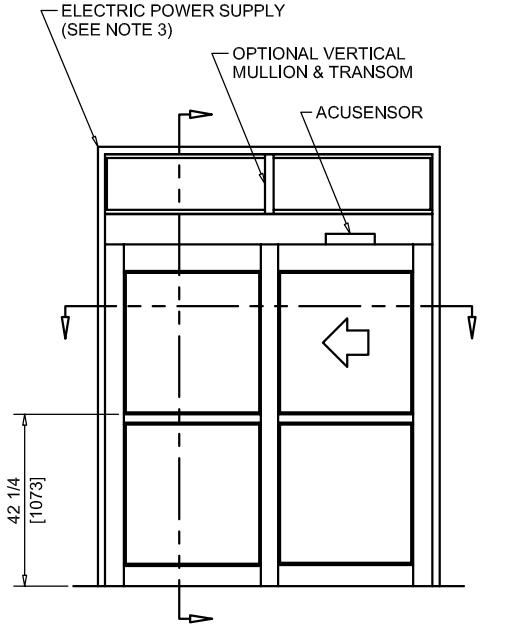




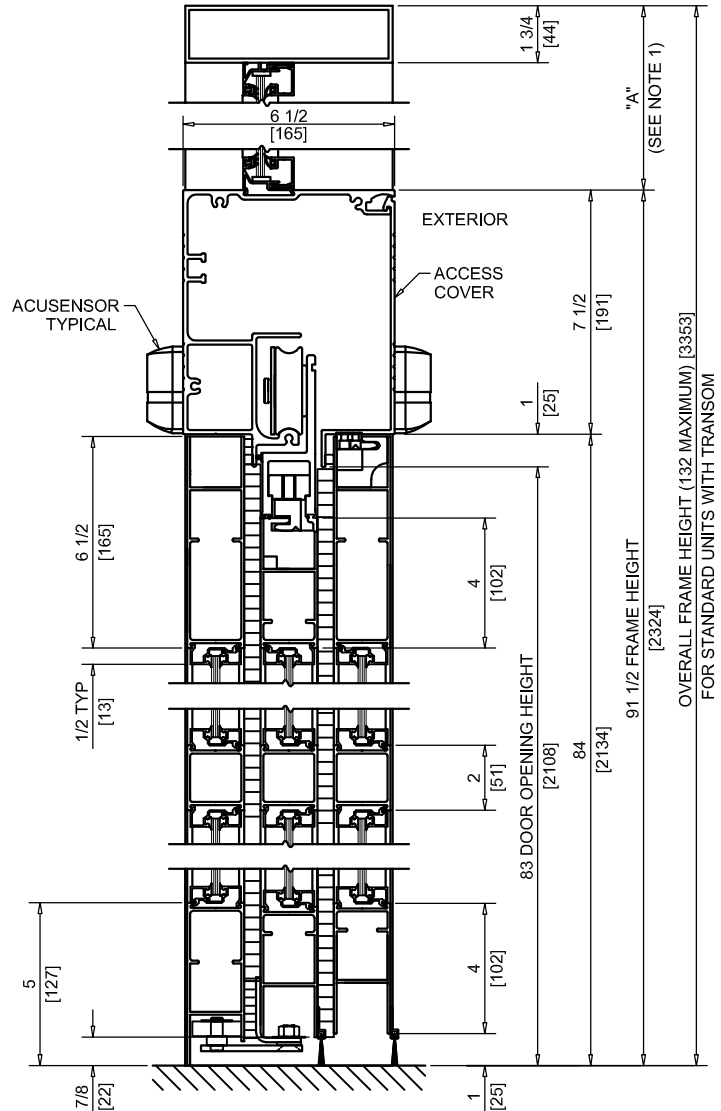
NABCO Entrances Inc.
 582 W18717 Gemini Drive Muskego, WI 53150
 www.nabcoentrances.com 1-877-622-2694

JOB NAME: _____
 LOCATION: _____
 DISTRIBUTOR: _____
 DOOR #: _____ DATE: _____
 SHEET _____ OF _____

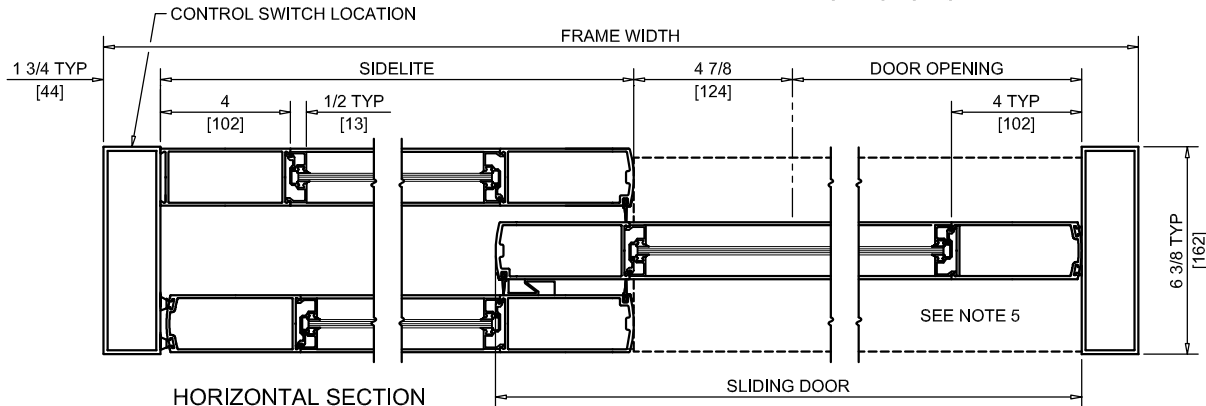
**WHISPER SLIDE
 GT1175-18LM**
 SINGLE SLIDE
 LH FIXED
 POCKETED
 MEDIUM STILE



EXTERIOR ELEVATION/PLAN



VERTICAL SECTION



HORIZONTAL SECTION

MEDIUM STILE

NOTES:

1. TRANSOM HEIGHT (DIMENSION "A") IS DETERMINED PER JOB REQUIREMENTS.
2. TRANSOM GLAZING IS SURFACE APPLIED FOR ALL GLASS THICKNESSES.
3. POWER TO HEADER WILL BE 115VAC, 5 AMP PER OPERATOR PROVIDED BY ELECTRICAL CONTRACTOR.
4. STANDARD LOCATION OF LOCK IS 35" FROM FINISH FLOOR TO CENTERLINE OF KEY CYLINDER.
5. 1/4 X 7 THRESHOLD THROUGH DOOR OPENING (AS SHOWN WITH DASHED LINES) IS OPTIONAL.
6. MASONRY OPENING EQUALS FRAME WIDTH +1/2" AND FRAME HEIGHT +1/4".
7. ONE SET OF HOLDING BEAMS AT 21" AFF STANDARD. SECOND SET AT 51" AFF IS OPTIONAL.

| DOOR OPENING | FULL BREAKOUT OPENING | FRAME WIDTH | SLIDING DOOR | SIDELITE |
|----------------|-----------------------|--------------|----------------|----------------|
| 34 1/8" [867] | 39" [991] | 7'-0" [2134] | 43 1/8" [1095] | 41 1/2" [1054] |
| 40 1/8" [1019] | 45" [1143] | 8'-0" [2438] | 49 1/8" [1248] | 47 1/2" [1207] |
| 43 1/8" [1095] | 48" [1219] | 8'-6" [2591] | 52 1/8" [1324] | 50 1/2" [1283] |
| 46 1/8" [1172] | 51" [1295] | 9'-0" [2743] | 55 1/8" [1400] | 53 1/2" [1359] |