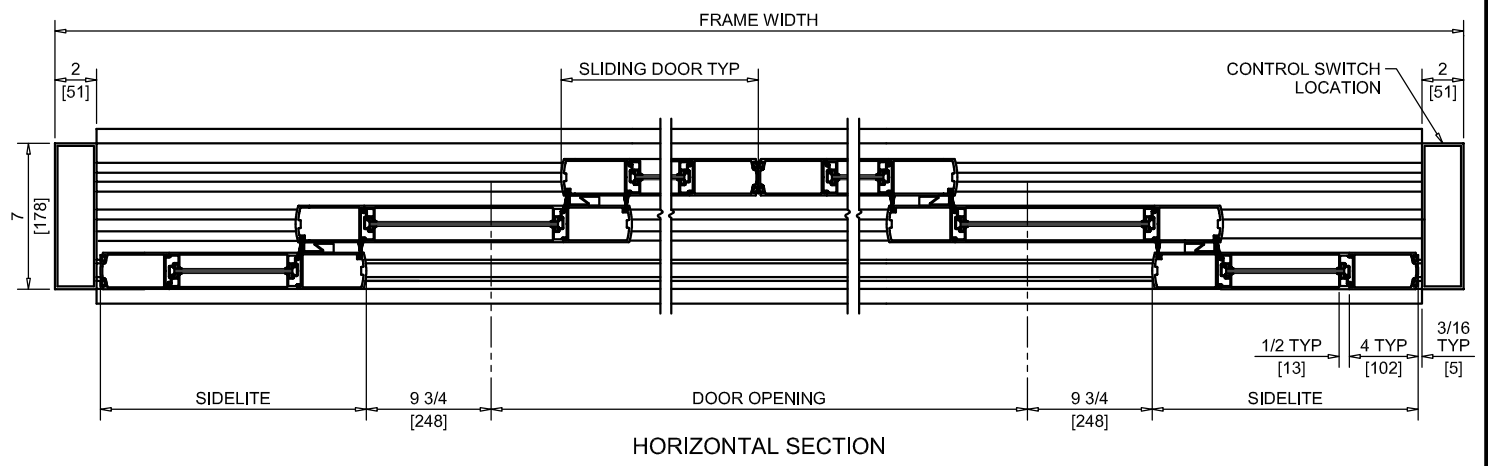
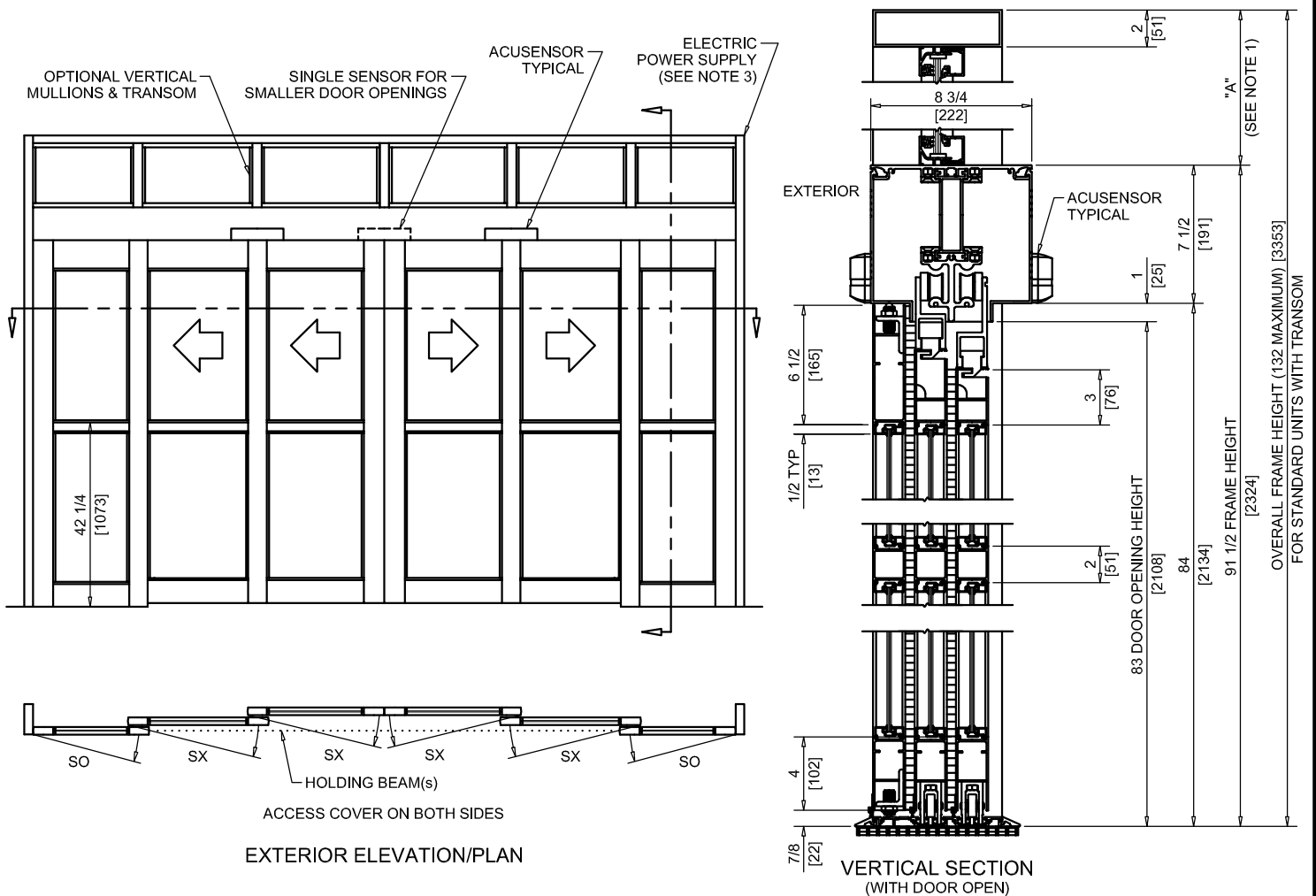




NABCO Entrances Inc.  
 582 W18717 Gemini Drive Muskego, WI 53150  
 www.nabcoentrances.com 1-877-622-2694

JOB NAME: \_\_\_\_\_  
 LOCATION: \_\_\_\_\_  
 DISTRIBUTOR: \_\_\_\_\_  
 DOOR #: \_\_\_\_\_ DATE: \_\_\_\_\_  
 SHEET \_\_\_\_\_ OF \_\_\_\_\_

**WHISPER SLIDE**  
**GT1175-17M**  
 BI-PART SLIDE  
 FULL OPEN  
 TELESCOPING  
 MEDIUM STILE



- NOTES:
1. TRANSOM HEIGHT (DIMENSION "A") IS DETERMINED PER JOB REQUIREMENTS.
  2. TRANSOM GLAZING IS SURFACE APPLIED FOR ALL GLASS THICKNESSES.
  3. POWER TO HEADER WILL BE 115VAC, 5 AMP PER OPERATOR PROVIDED BY ELECTRICAL CONTRACTOR.
  4. STANDARD LOCATION OF LOCK IS 35" FROM FINISH FLOOR TO CENTERLINE OF KEY CYLINDER.
  5. 1/2" THRESHOLD THROUGH DOOR OPENING IS REQUIRED.
  6. MASONRY OPENING EQUALS FRAME WIDTH +1/2" AND FRAME HEIGHT +1/4".
  7. ONE SET OF HOLDING BEAMS AT 21" AFF STANDARD. SECOND SET AT 51" AFF IS OPTIONAL.

**MEDIUM STILE**

	DOOR OPENING	FULL BREAKOUT OPENING	FRAME WIDTH	SLIDING DOOR	SIDELITE
MIN.	52 1/2" [1334]	92" [2337]	9'-4 1/2" [2858]	22 1/8" [562]	18 1/16" [459]
MAX.	105 1/2" [2680]	171 1/2" [4356]	16'-0" [4877]	35 3/8" [899]	31 5/16" [795]