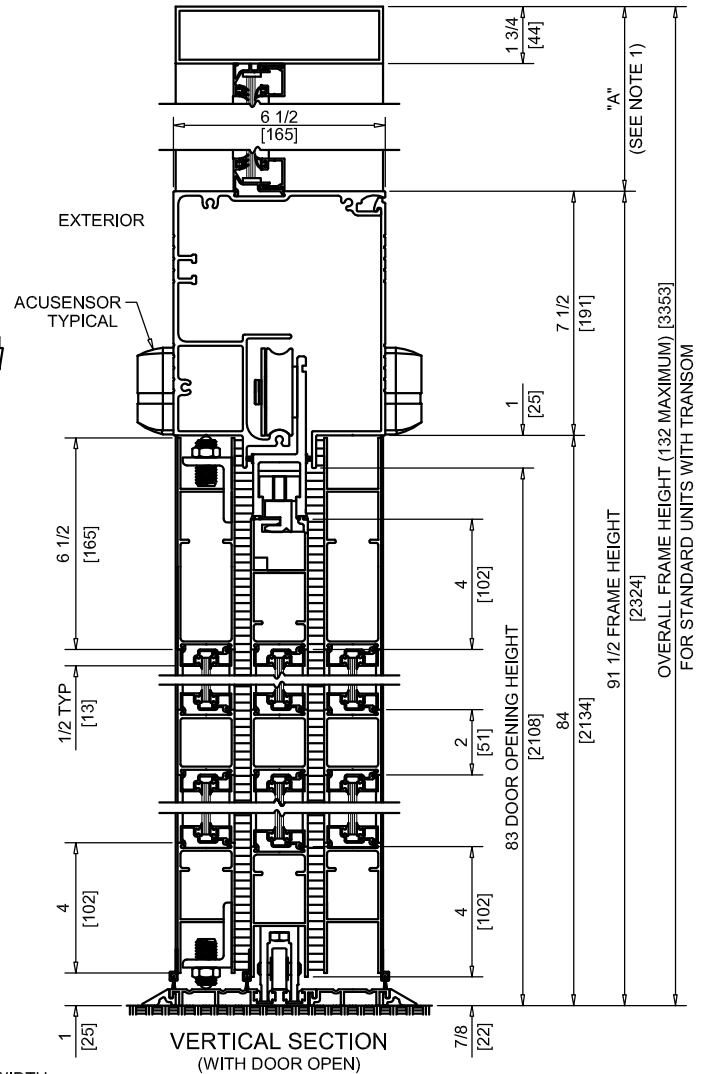
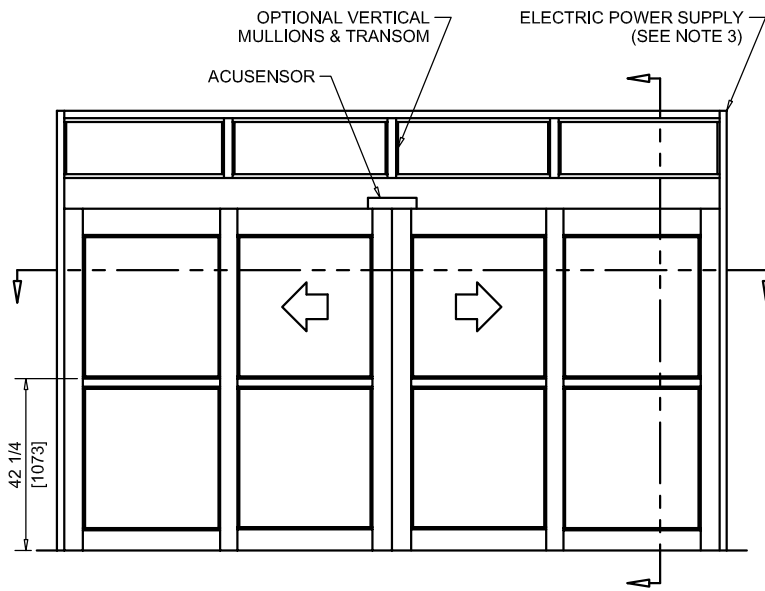




NABCO Entrances Inc.
 582 W18717 Gemini Drive Muskego, WI 53150
 www.nabcoentrances.com 1-877-622-2694

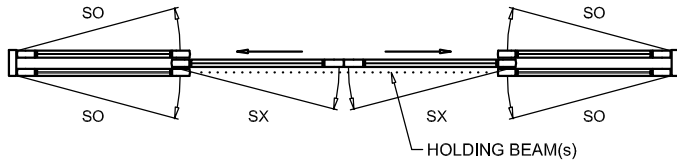
JOB NAME: _____
 LOCATION: _____
 DISTRIBUTOR: _____
 DOOR #: _____ DATE: _____
 SHEET _____ OF _____

WHISPER SLIDE
GT1175-06M
 BI-PART SLIDE
 FULL OPEN
 POCKETED
 MEDIUM STILE



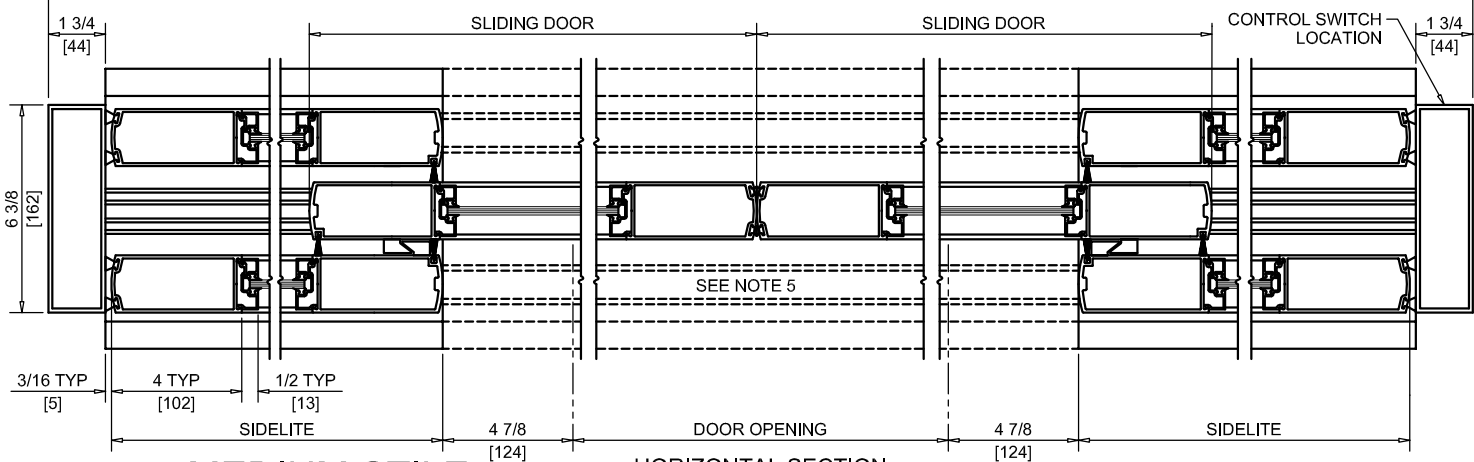
ACCESS COVER (INTERIOR SIDE)

BRACKETS MUST BE REMOVED TO ALLOW INTERIOR SIDELITES TO SWING OPEN



EXTERIOR ELEVATION/PLAN

FRAME WIDTH



MEDIUM STILE

HORIZONTAL SECTION

NOTES:

1. TRANSOM HEIGHT (DIMENSION "A") IS DETERMINED PER JOB REQUIREMENTS.
2. TRANSOM GLAZING IS SURFACE APPLIED FOR ALL GLASS THICKNESSES.
3. POWER TO HEADER WILL BE 115VAC, 5 AMP PER OPERATOR PROVIDED BY ELECTRICAL CONTRACTOR.
4. STANDARD LOCATION OF LOCK IS 35" FROM FINISH FLOOR TO CENTERLINE OF KEY CYLINDER.
5. THRESHOLD THROUGH DOOR OPENING (AS SHOWN WITH DASHED LINES) IS OPTIONAL.
6. MASONRY OPENING EQUALS FRAME WIDTH +1/2" AND FRAME HEIGHT +1/4".
7. ONE SET OF HOLDING BEAMS AT 21" AFF STANDARD. SECOND SET AT 51" AFF IS OPTIONAL.

DOOR OPENING	FULL BREAKOUT OPENING	FRAME WIDTH	SLIDING DOOR	SIDELITE
48" [1219]	57 3/4" [1467]	10'-0" [3048]	33" [838]	29 3/16" [741]
60" [1524]	69 3/4" [1772]	12'-0" [3658]	39" [991]	35 3/16" [894]
72" [1829]	81 3/4" [2076]	14'-0" [4267]	45" [1143]	41 3/16" [1046]
84" [2134]	93 3/4" [2381]	16'-0" [4877]	51" [1295]	47 3/16" [1199]
96" [2438]	105 3/4" [2686]	18'-0" [5486]	57" [1448]	53 3/16" [1351]