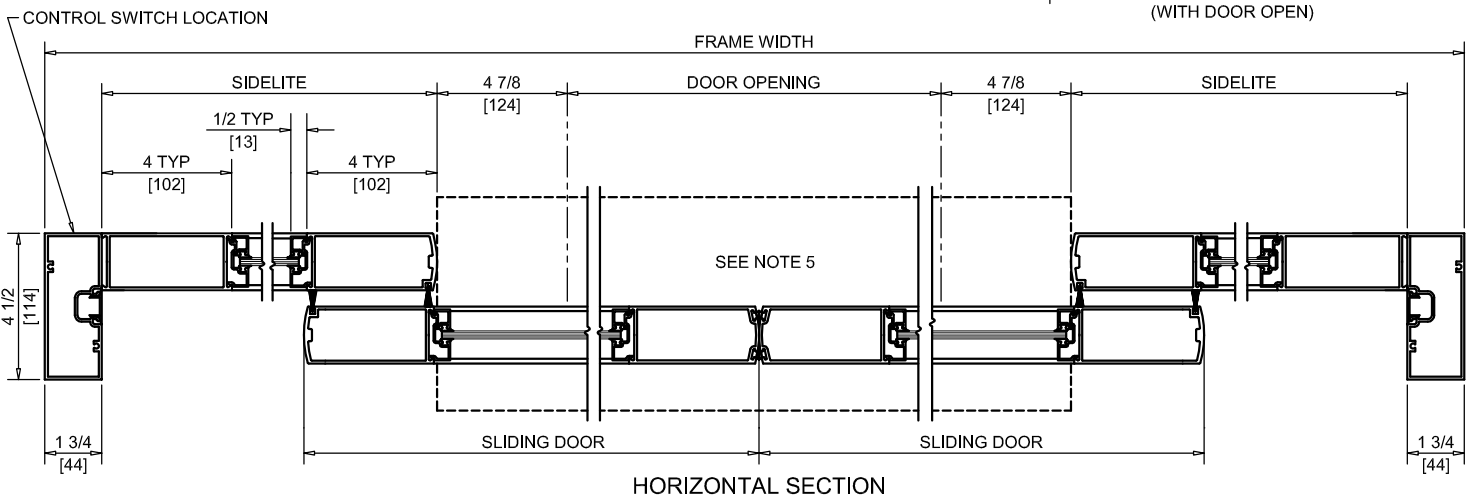
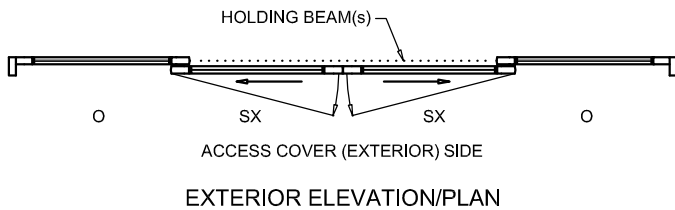
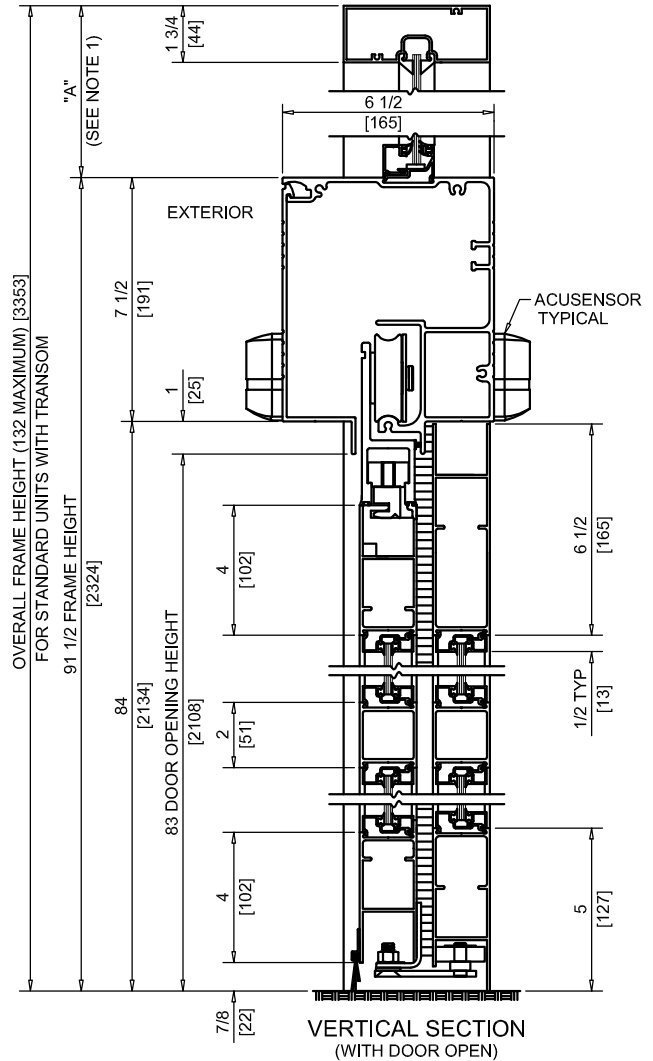
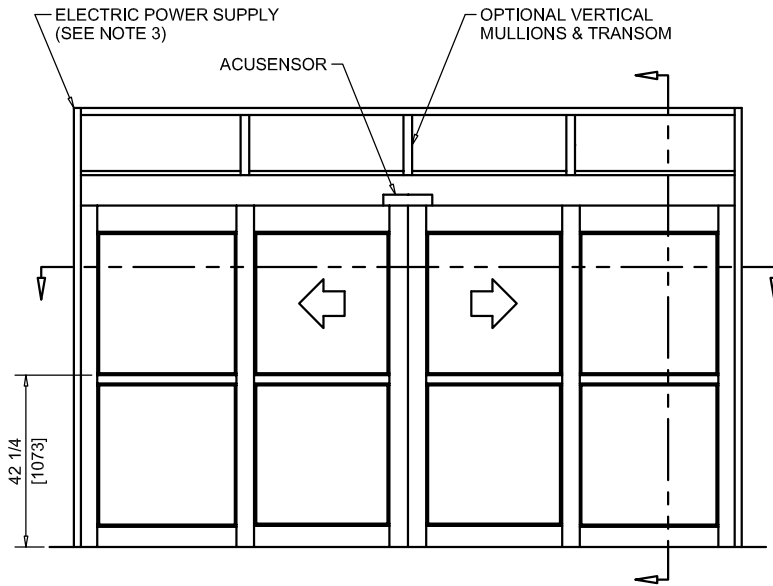




NABCO Entrances Inc.
 582 W18717 Gemini Drive Muskego, WI 53150
 www.nabcoentrances.com 1-877-622-2694

JOB NAME: _____
 LOCATION: _____
 DISTRIBUTOR: _____
 DOOR #: _____ DATE: _____
 SHEET _____ OF _____

WHISPER SLIDE
GT1175-02M
 BI-PART SLIDE
 FIXED SIDELITE
 MEDIUM STILE



MEDIUM STILE

| DOOR OPENING | FULL BREAKOUT OPENING | FRAME WIDTH | SLIDING DOOR | SIDELITE |
|--------------|-----------------------|---------------|--------------|----------------|
| 48" [1219] | 57 3/4" [1467] | 10'-0" [3048] | 33" [838] | 29 3/8" [746] |
| 60" [1524] | 69 3/4" [1772] | 12'-0" [3658] | 39" [991] | 35 3/8" [899] |
| 72" [1829] | 81 3/4" [2076] | 14'-0" [4267] | 45" [1143] | 41 3/8" [1051] |
| 84" [2134] | 93 3/4" [2381] | 16'-0" [4877] | 51" [1295] | 47 3/8" [1203] |
| 96" [2438] | 105 3/4" [2686] | 18'-0" [5486] | 57" [1448] | 53 3/8" [1356] |

NOTES:

1. TRANSOM HEIGHT (DIMENSION "A") IS DETERMINED PER JOB REQUIREMENTS.
2. FLUSH GLAZING FOR 1/4" GLASS ONLY. NON POCKETED JAMBS USED FOR NO TRANSOM APPLICATIONS.
3. POWER TO HEADER WILL BE 115VAC, 5 AMP PER OPERATOR PROVIDED BY ELECTRICAL CONTRACTOR.
4. STANDARD LOCATION OF LOCK IS 35" FROM FINISH FLOOR TO CENTERLINE OF KEY CYLINDER.
5. 1/4 X 7 THRESHOLD THROUGH DOOR OPENING (AS SHOWN WITH DASHED LINES) IS OPTIONAL.
6. MASONRY OPENING EQUALS FRAME WIDTH +1/2" AND FRAME HEIGHT +1/4".
7. ONE SET OF HOLDING BEAMS AT 21" AFF STANDARD. SECOND SET AT 51" AFF IS OPTIONAL.