



S82 W18717 Gemini Drive  
Muskego, WI, 53150  
Phone: (877) 622-2694, Fax: (888) 679-3319  
www.NABCOEntrances.com

Date: July 26, 2017

Who is the contact?  
Technical Support Department

## **Sensor Monitoring will soon be part of the ANSI A156.10 Power Operated Pedestrian Door Standard (does NOT apply to Low Energy doors)**

### **What exactly changed in the Standard?**

From the Sensor section of the Standard:

*“**8.1.4** Monitoring Automatic sliding, swinging, and folding door systems shall include a means to verify each presence sensor’s functionality, and the interface between the automatic door control system and each presence sensor as required in 8.2.2, 8.3.2, and 8.4.2 and, where applicable, in Section 9. A detected fault shall cause automatic operation to cease until the fault is corrected. At a minimum, monitoring shall occur once prior to closing. (See Appendix E-6)”*

### **Do ALL doors have to comply?**

Appendix E-6 of the new standard “Grandfathered” all older installations:

*“**E-6** Each revision of the standard recognizes innovation and technological advances in products and their application since the last standard revision. Presence Sensor/Mat Monitoring is new to the 2017 revision of this standard. It is not mandatory to include presence sensor/mat monitoring on door systems installed prior to the publication of this standard revision. Compliance with the requirements of the new standard on existing installations may be determined by applicable local building codes.”*

Bulletin Number: **86**

S82 W18717 Gemini Drive  
 Muskego, WI, 53150  
 Phone: (877) 622-2694, Fax: (888) 679-3319  
 www.NABCOEntrances.com

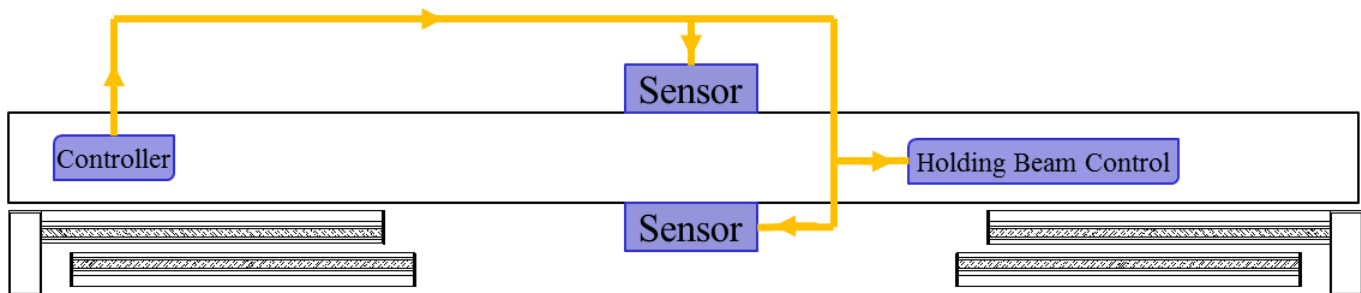
Date: July 26, 2017

Who is the contact?  
 Technical Support Department

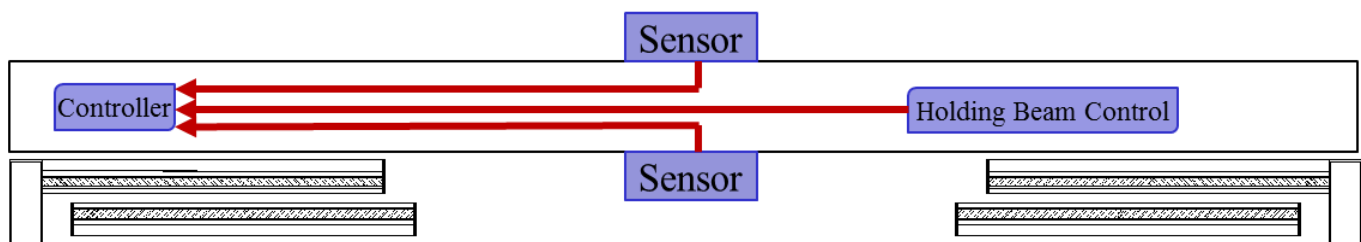
## Sensor Monitoring will soon be part of the ANSI A156.10 Power Operated Pedestrian Door Standard

### How does sensor monitoring work?

1. A sensor detects someone and tells the control to open the door.
2. Once the door is open and all sensors are clear, the control sends a signal to each safety sensor's Test input to ask if they are functioning properly.



3. Each sensor responds on their individual outputs.



4. If ALL monitored sensors respond that they are OK then the control closes the door.
5. If ANY sensor fails to respond properly, the control holds the door open until the problem with that sensor is resolved.
6. On NABCO products, the control will display an Error, for diagnostic purposes, that specifies which sensor has the fault (the error notification is not a required part of the ANSI standard). If the unit has a U30 Microprocessor, the Error will be displayed on the Handy Terminal. If it's an Opus, then the Error will display on the LCD screen.

Bulletin Number: **86**

S82 W18717 Gemini Drive  
 Muskego, WI, 53150  
 Phone: (877) 622-2694, Fax: (888) 679-3319  
 www.NABCOEntrances.com

Date: July 26, 2017

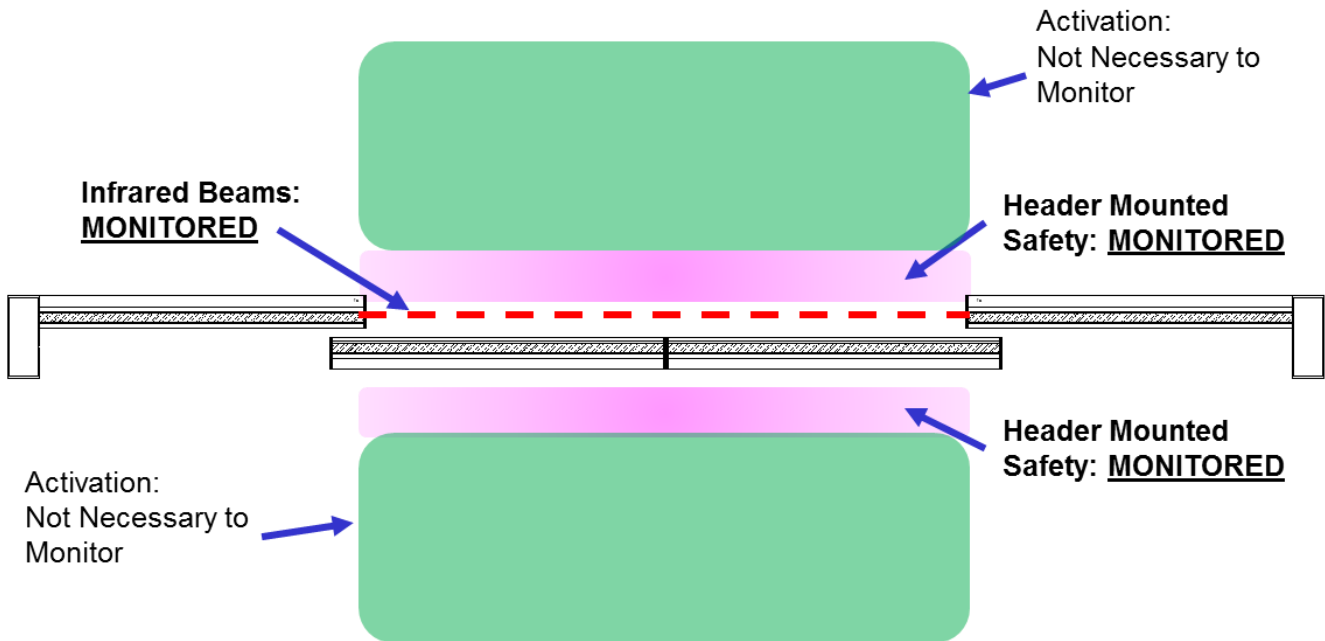
Who is the contact?  
 Technical Support Department

## Sensor Monitoring will soon be part of the ANSI A156.10 Power Operated Pedestrian Door Standard

### Which sensors must be monitored?

ALL presence sensors including safety mats must be monitored. Saying it a different way, any sensor that provides a safety zone for an automatic door must be monitored. So if an activation sensor also provides a safety zone, it must be monitored. Activation only sensors don't need to be. See illustrations below:

### Slide Doors



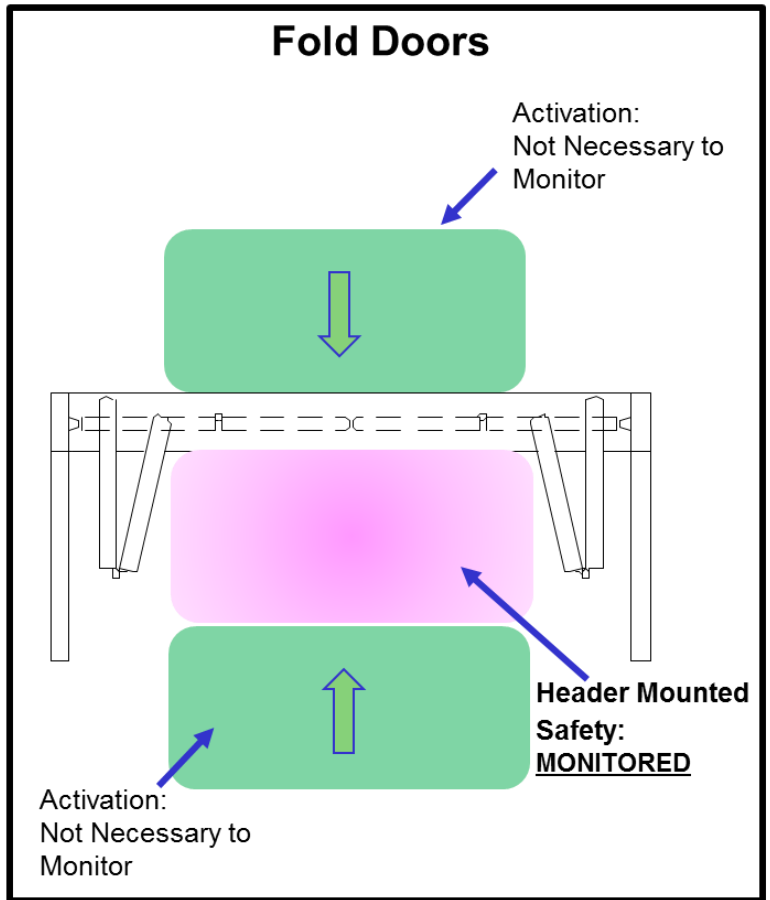
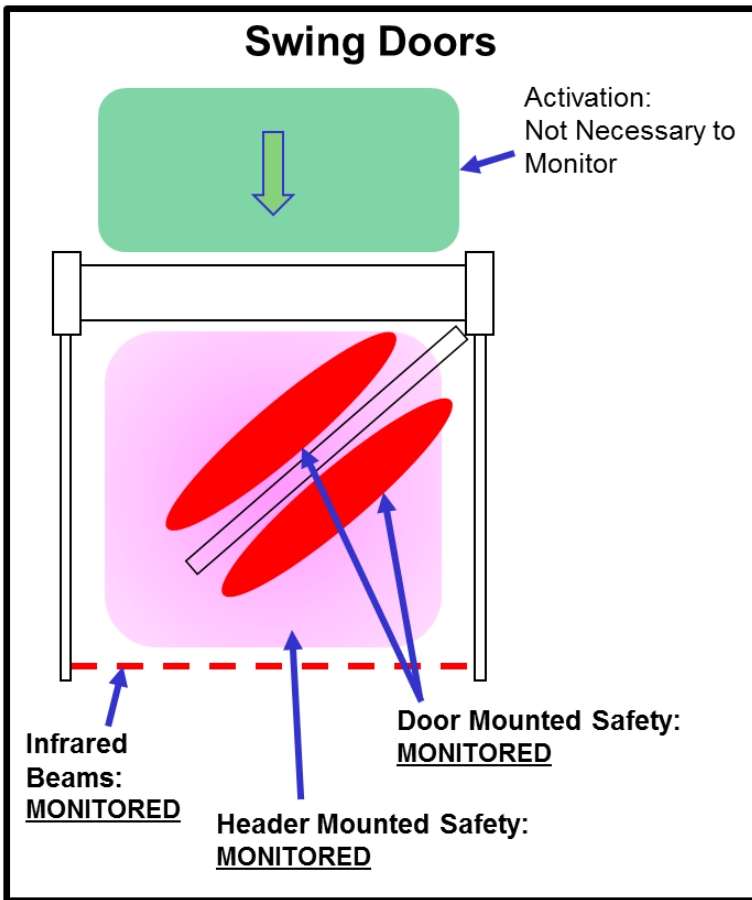
Bulletin Number: **86**

S82 W18717 Gemini Drive  
 Muskego, WI, 53150  
 Phone: (877) 622-2694, Fax: (888) 679-3319  
 www.NABCOEntrances.com

Date: July 26, 2017

Who is the contact?  
 Technical Support Department

## Sensor Monitoring will soon be part of the ANSI A156.10 Power Operated Pedestrian Door Standard



Bulletin Number: **86**

S82 W18717 Gemini Drive  
Muskego, WI, 53150  
Phone: (877) 622-2694, Fax: (888) 679-3319  
www.NABCOEntrances.com

Date: July 26, 2017

Who is the contact?  
Technical Support Department

## Sensor Monitoring will soon be part of the ANSI A156.10 Power Operated Pedestrian Door Standard

**Which sensors, that NABCO sells, have monitoring?**

### Slide door sensors

- Acusensor M
- Acuzone T
- i-One T
- OS-12C T Holding beams
- IXIO-DT1

### Swing door sensors

- Pro-Swing Elite T
- OA-Edge T

**Which sensors, that NABCO sells, do NOT have monitoring?**

- Acuvision
- Reaction Two

**Will I have to rewire new GT1175 units?**

No. NABCO has been shipping units that are wired for and capable of monitoring since late fall of 2016. U30 controls have monitoring capabilities starting with Revision E which became available last fall as well.

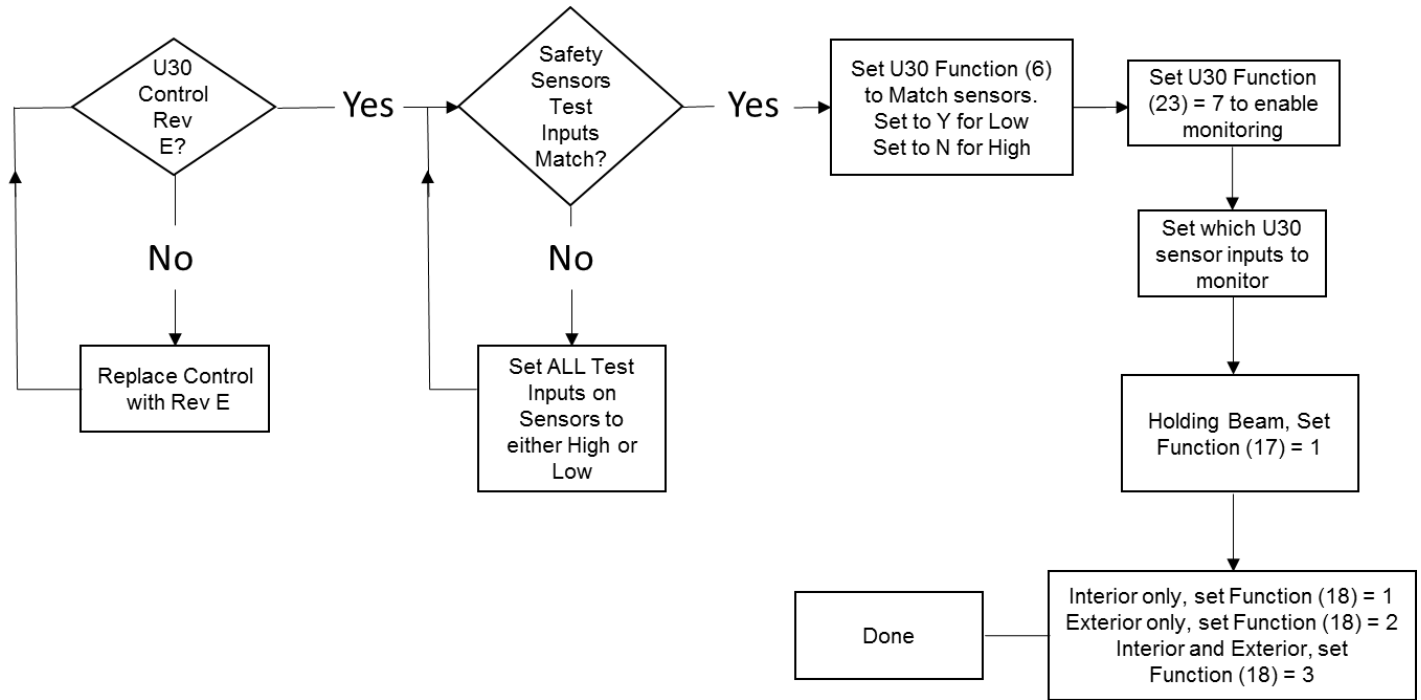
The final letter designates the Revision



Bulletin Number: **86**

## Sensor Monitoring will soon be part of the ANSI A156.10 Power Operated Pedestrian Door Standard

### How do I set up monitoring on a new Slide Door?



Verify that you have a U30 Rev E control. Only the Rev E has monitoring capability. Monitored sensors have a test input that is either High or Low. All sensors that are to be monitored MUST be set the same, all High or all Low. If not set properly, the door will stay open forever. The U30 control must be set to the same High or Low as the sensors, Function (6). It must also have monitoring enabled on its Auxiliary Output 2, Function (23). Finally you must tell it which input lines are to be monitored: holding Beams (Function (17)), interior or exterior sensors (Function (18)).

Bulletin Number: **86**



S82 W18717 Gemini Drive  
Muskego, WI, 53150  
Phone: (877) 622-2694, Fax: (888) 679-3319  
www.NABCOEntrances.com

Date: July 26, 2017

Who is the contact?  
Technical Support Department

## Sensor Monitoring will soon be part of the ANSI A156.10 Power Operated Pedestrian Door Standard

### What all needs to be replaced to retrofit an existing door?

#### Slide Doors:

If the door has a U30 Revision E then it probably has a yellow wire that connects all the sensors Test inputs. It also probably has monitoring capable sensors. If so, then you just need to setup the sensors and the U30 for monitoring.

If the door has a U30 but it isn't a Revision E then you would need to replace the control in addition to adding a wire to connect all the sensor's Test inputs. You would also have to replace the existing sensors with monitoring capable sensors if they aren't already. Then you would just have to set up the sensors and U30 for monitoring.

If you have a U00 through U19 control then your least expensive route would be to replace the control with an Opus board. Opus has monitoring built in so you would just have to get monitoring capable sensors and run a wire to each of the Test inputs. Retrofit kits are available through your NABCO branch office.

#### Swing Doors:

If a swing door has an Opus control then it is already monitoring capable. You just need to setup the monitoring capable sensors and the Opus for monitoring.

If a swing door has a Magnum, analog, or U19 or earlier control then you would need to replace that control with an Opus in addition to adding a wire to connect all the sensor's Test inputs. You would also have to replace the existing sensors with monitoring capable sensors. Opus retrofit kits for swing doors are available through your NABCO branch office.

#### Fold Doors:

If a fold door has an Opus control then it is already monitoring capable. You just need to setup the monitoring capable sensors and the Opus for monitoring.

If a fold door has a Magnum or U19 or earlier control then you would need to replace that control with an Opus in addition to adding a wire to connect all the sensor's Test inputs. You would also have to replace the existing sensors with monitoring capable sensors. Opus retrofit kits for fold doors are available through your NABCO branch office.

Bulletin Number: **86**