



GYRO TECH™

by NABCO Entrances Inc.

Where quality and service are automatic

WWW.NABCOENTRANCES.COM

1-877-622-2694

JOB NAME: _____

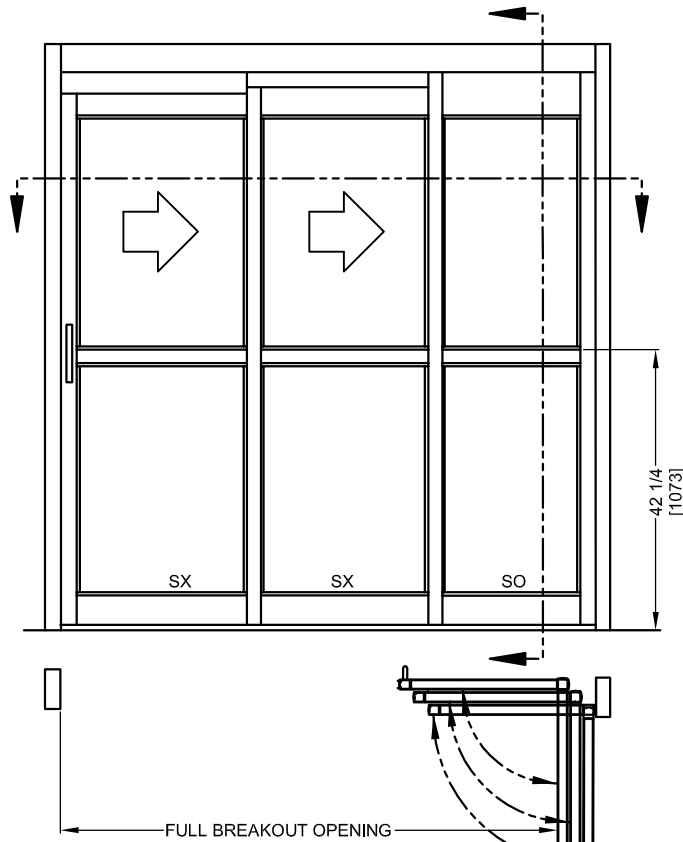
LOCATION: _____

DISTRIBUTOR: _____

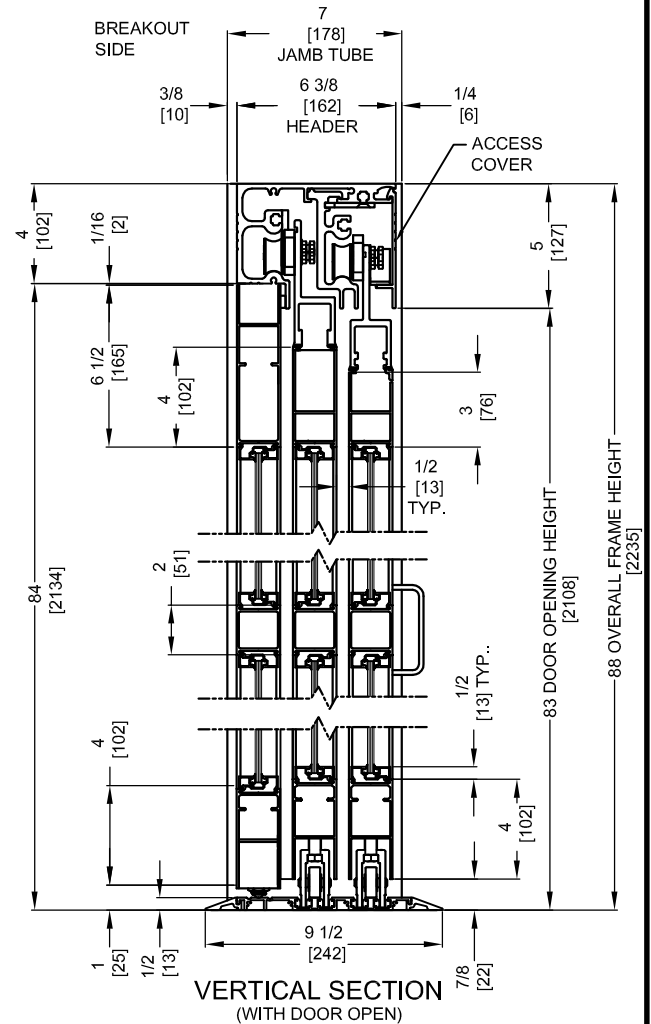
DOOR #: _____ DATE: _____

SHEET _____ OF _____

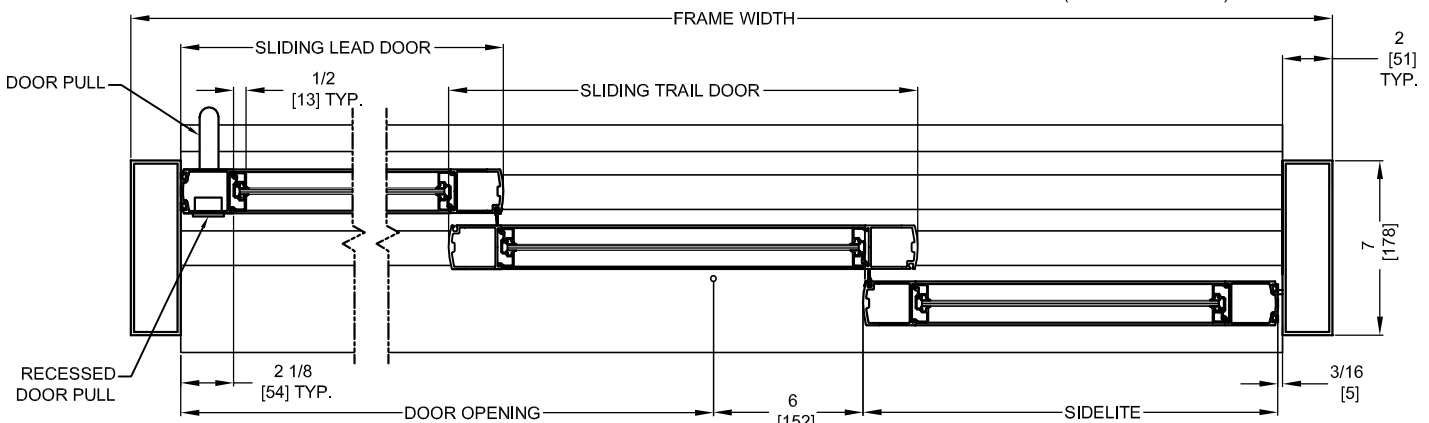
GT2150TR
 SINGLE SLIDE
 RIGHT HAND
 FULL OPEN
 W/FLOOR TRACK
 TELESCOPIC



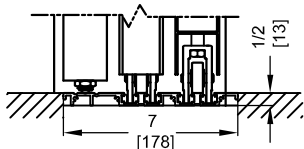
BREAKOUT PLAN/ ELEVATION
 ACCESS COVER ON NON-BREAKOUT SIDE



VERTICAL SECTION
 (WITH DOOR OPEN)



HORIZONTAL SECTION



RECESSED TRACK
 (OPTIONAL)

NOTES:

1. "D" HANDLE PROVIDED ON NON BREAKOUT SIDE. RECESSED HANDLE PROVIDED ON BREAKOUT SIDE.
2. THRESHOLD THROUGH DOOR OPENING IS STANDARD.
3. BREAKOUT IN ANY POSITION.
4. UNITS ARE HANDED FROM BREAKOUT SIDE.
5. VINYL WEATHERING IS STANDARD.
6. CASTERS ARE REQUIRED ON ALL PANELS GREATER THAN 54" WIDE AND/OR 200 LBS. OR MORE.
7. ROUGH OPENING EQUALS FRAME WIDTH +1/2" AND OVERALL FRAME HEIGHT +1/4".

	DOOR OPENING	FULL BREAKOUT OPENING	FRAME WIDTH	SLIDING LEAD DOOR	SLIDING TRAIL DOOR	SIDELITE
MIN.	32 1/8" [816]	48 1/2" [1232]	5'-1 1/2" [1562]	21 3/8" [543]	21 3/8" [543]	19 3/16" [487]
MAX.	95 1/8" [2416]	143" [3632]	13'-0" [3962]	52 7/8" [1343]	52 7/8" [1343]	50 11/16" [1287]