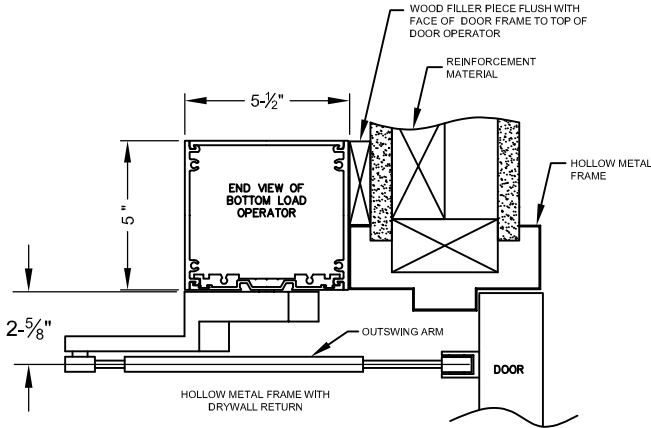




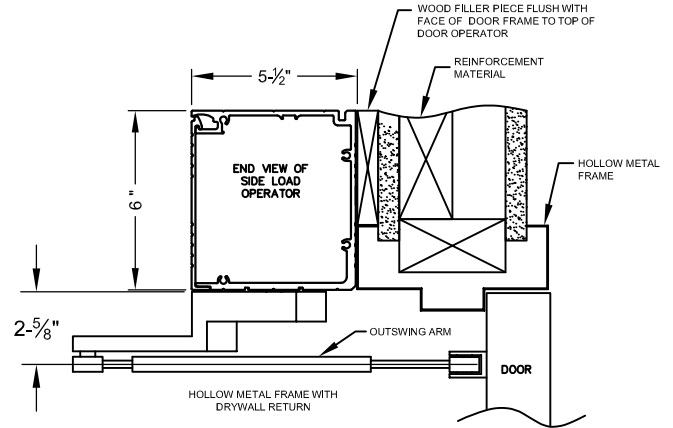
NABCO Entrances Inc.  
 582 W18717 Gemini Drive Muskego, WI 53150  
 www.nabcoentrances.com 1-877-622-2694

JOB NAME: \_\_\_\_\_  
 LOCATION: \_\_\_\_\_  
 DISTRIBUTOR: \_\_\_\_\_  
 DOOR #: \_\_\_\_\_ DATE: \_\_\_\_\_  
 SHEET \_\_\_\_\_ OF \_\_\_\_\_

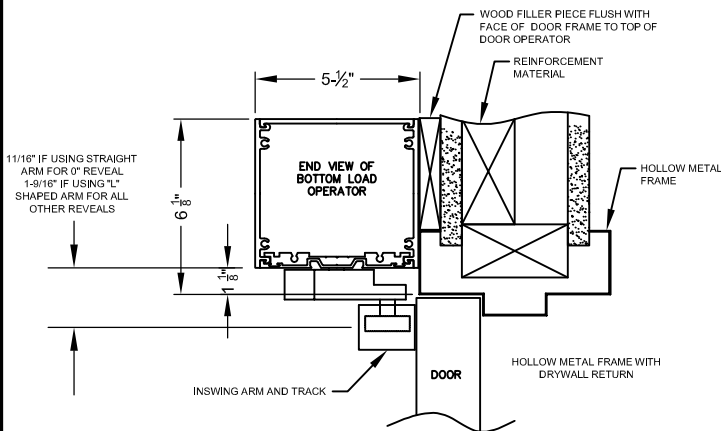
# MOUNTING OPERATOR TO METAL DOOR AND FRAME



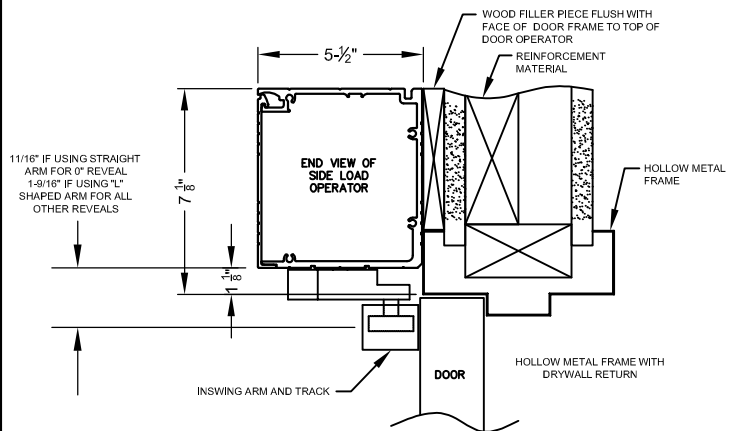
**BOTTOM LOAD  
 OUTSWING UNIT**



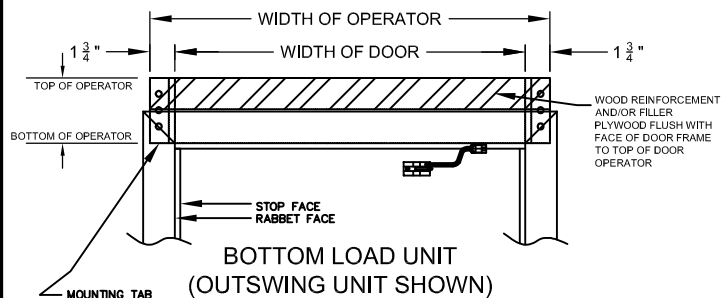
**SIDE LOAD  
 OUTSWING UNIT**



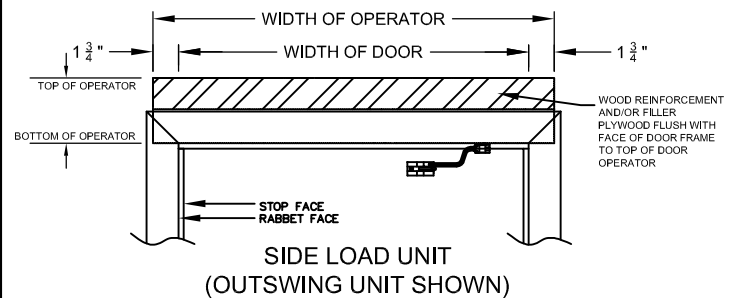
**BOTTOM LOAD  
 INSWING UNIT**



**SIDE LOAD  
 INSWING UNIT**



**BOTTOM LOAD UNIT  
 (OUTSWING UNIT SHOWN)**



**SIDE LOAD UNIT  
 (OUTSWING UNIT SHOWN)**

**NOTES:**

1. DOOR OPERATOR INTENDED TO MOUNT FLUSH WITH FACE OF DOOR FRAME.
2. FINISHED WALL ABOVE MUST BE FLUSH WITH FACE OF FINISHED FRAME UP TO HEIGHT OF 8" ABOVE BOTTOM EDGE OF FRAME FACE.
3. REINFORCEMENT MATERIAL (EITHER PLYWOOD OR SOLID STRUCTURAL LUMBER) MUST BE INSTALLED BEHIND AND/OR IN PLACE OF FINISHED WALL MATERIAL AND BE SECURED TO WALL FRAMING TO PROVIDE STRONG SURFACE FOR MOUNTING DOOR OPERATOR. IF FACE OF FRAME IS NOT FLUSH WITH FINISHED WALL, ADDITIONAL PLYWOOD IS REQUIRED AS SHOWN TO PROVIDE FLUSH AND STABLE SURFACE FOR MOUNTING DOOR OPERATOR.
4. REFER TO INSTALLATION INSTRUCTION MANUALS FOR EACH OPERATOR FOR ADDITIONAL MOUNTING DETAILS AND DIMENSIONS.
5. DRAWING IS FOR GENERAL REFERENCE PURPOSES ONLY AND NOT TO SCALE.