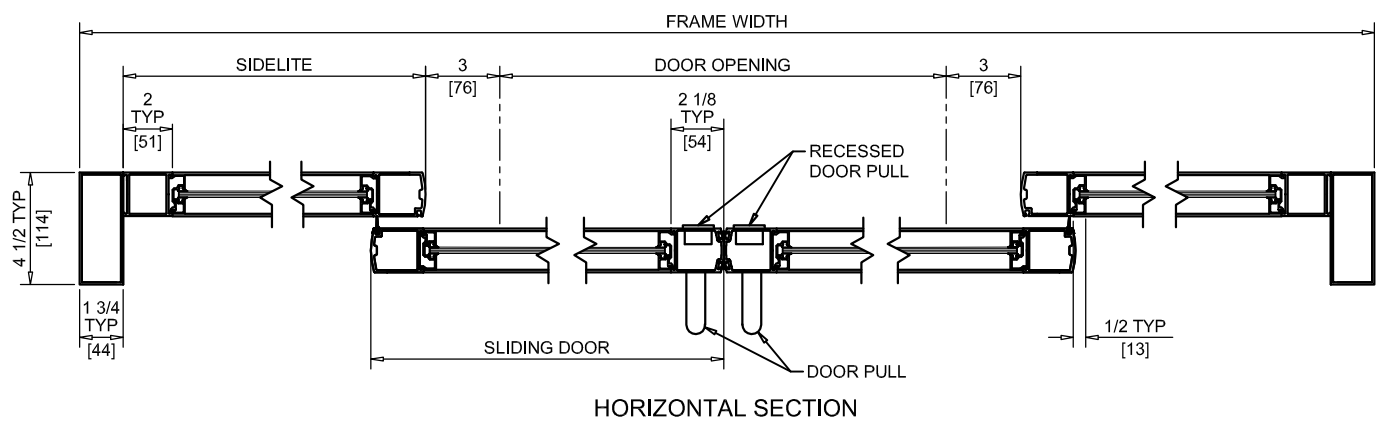
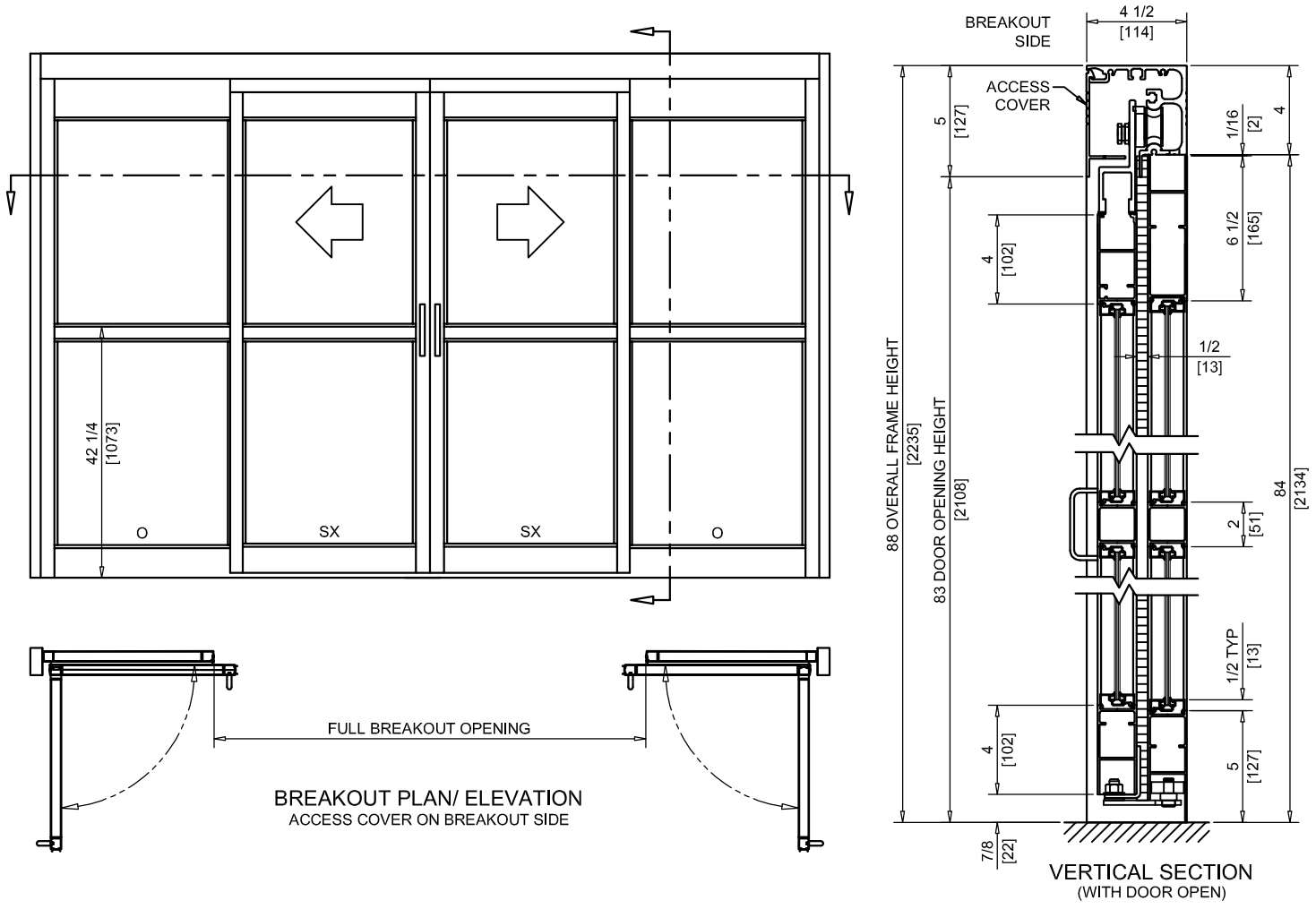




NABCO Entrances Inc.
 S82 W18717 Gemini Drive Muskego, WI 53150
 www.nabcoentrances.com 1-877-622-2694

JOB NAME: _____
 LOCATION: _____
 DISTRIBUTOR: _____
 DOOR #: _____ DATE: _____
 SHEET _____ OF _____

GT2125B
 BI-PART SLIDE
 FIXED SIDELITE
 TRACKLESS



- NOTES:
- "D" HANDLE PROVIDED ON BREAKOUT SIDE. RECESSED HANDLE PROVIDED ON NON BREAKOUT SIDE.
 - NO FLOOR TRACK TO INTERFERE WITH TRAFFIC.
 - BREAKOUT IN ANY POSITION.
 - UNITS ARE HANDED FROM THE BREAKOUT SIDE.
 - VINYL WEATHERING IS STANDARD.
 - CASTERS ARE REQUIRED ON ALL PANELS GREATER THEN 54" WIDE AND/OR 200 LBS OR MORE.
 - ROUGH OPENING EQUALS FRAME WIDTH +1/2" AND FRAME HEIGHT +1/4".
 - SELF CLOSING AND HOLD OPEN (REQUIRES POWER TO HEADER) FEATURES OPTIONAL ON UNITS WITH SX PANELS UNDER 135 LBS.

DOOR OPENING	FULL BREAKOUT OPENING	FRAME WIDTH	SLIDING DOOR	SIDELITE
48" [1219]	54" [1371]	9'-3 1/2" [2832]	29 1/4" [743]	27" [686]
60" [1524]	66" [1676]	11'-3 1/2" [3442]	35 1/4" [895]	33" [838]
72" [1829]	78" [1981]	13'-3 1/2" [4051]	41 1/4" [1048]	39" [991]
84" [2134]	90" [2286]	15'-3 1/2" [4661]	47 1/4" [1200]	45" [1143]
96" [2438]	102" [2591]	17'-3 1/2" [5271]	53 1/4" [1353]	51" [1295]