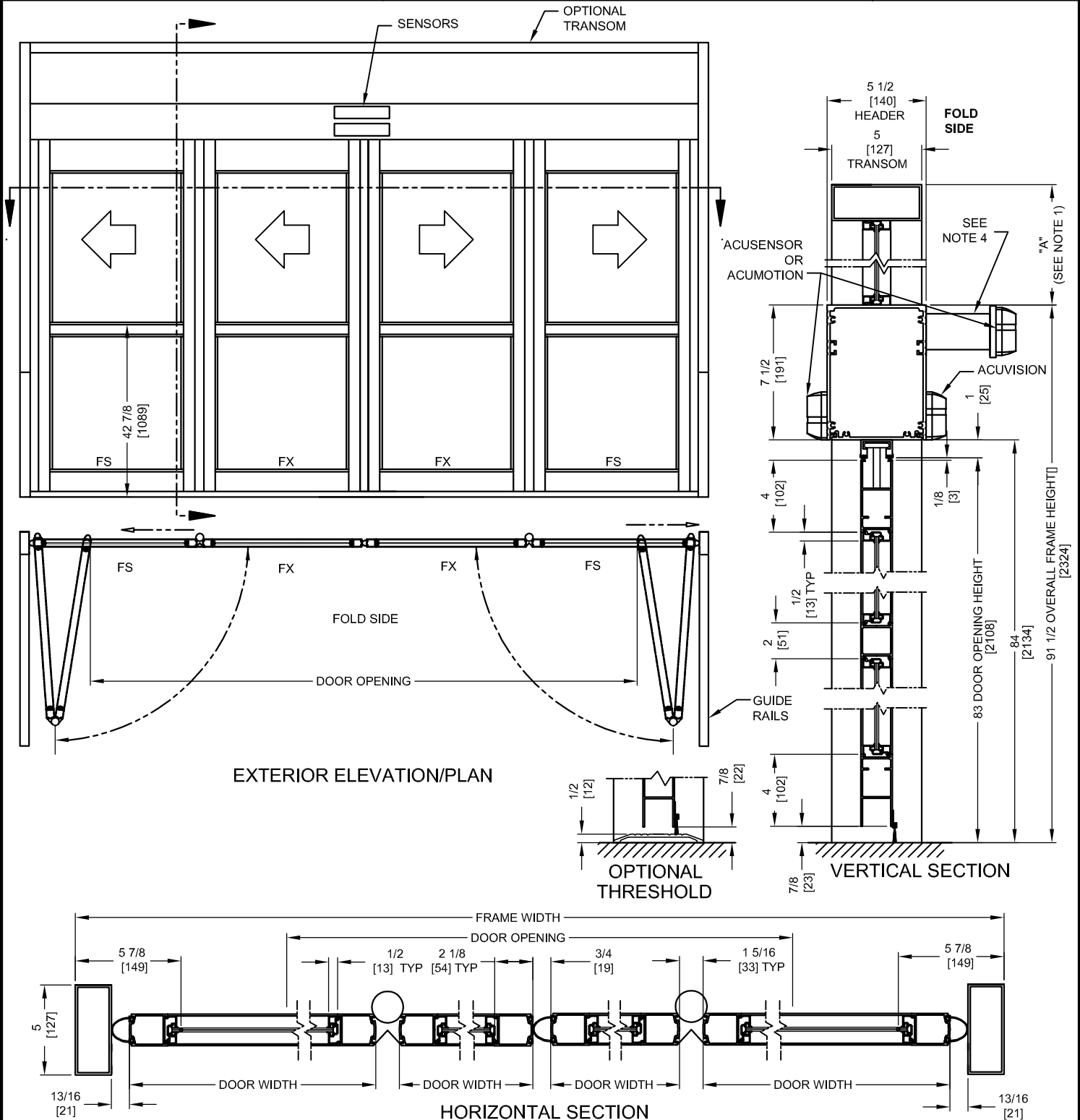




NABCO Entrances Inc.
 S82 W18717 Gemini Drive Muskego, WI 53150
 www.nabcoentrances.com 1-877-622-2694

JOB NAME: _____
 LOCATION: _____
 DISTRIBUTOR: _____
 DOOR #: _____ DATE: _____
 SHEET _____ OF _____

GT1400-02
 BI-FOLD
 DOOR



	DOOR OPENING	FULL BREAKOUT OPENING	FRAME WIDTH	DOOR WIDTH
MINIMUM	52 3/8" [1330]	64 1/4" [1632]	6'-4" [1930]	16 3/4" [425]
	59 15/16" [1522]	72 1/4" [1835]	7'-0" [2134]	18 3/4" [476]
	65 9/16" [1665]	78 1/4" [1988]	7'-6" [2286]	20 1/4" [514]
	71 1/4" [1810]	84 1/4" [2140]	8'-0" [2438]	21 3/4" [552]
	76 15/16" [1954]	90 1/4" [2292]	8'-6" [2591]	23 1/4" [591]
MAXIMUM	82 5/8" [2099]	96 1/4" [2445]	9'-0" [2743]	24 3/4" [629]

- NOTES:
1. TRANSOM HEIGHT (DIMENSION "A") IS DETERMINED PER JOB REQUIREMENTS.
 2. POWER TO HEADER WILL BE 115VAC, 10 AMP PER OPERATOR PROVIDED BY ELECTRICAL CONTRACTOR.
 3. STANDARD FINISHES ARE 204 CLEAR AND 313 DARK BRONZE. OTHER FINISHES ARE AVAILABLE.
 4. SENSOR MOUNTING TUBE LENGTH VARIES BY DOOR WIDTH.
 5. MASONRY OPENING EQUALS FRAME WIDTH +1/2" AND FRAME HEIGHT +1/4".