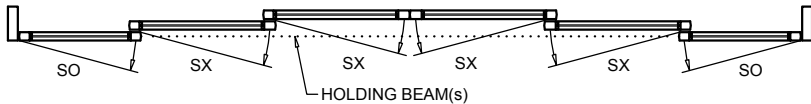
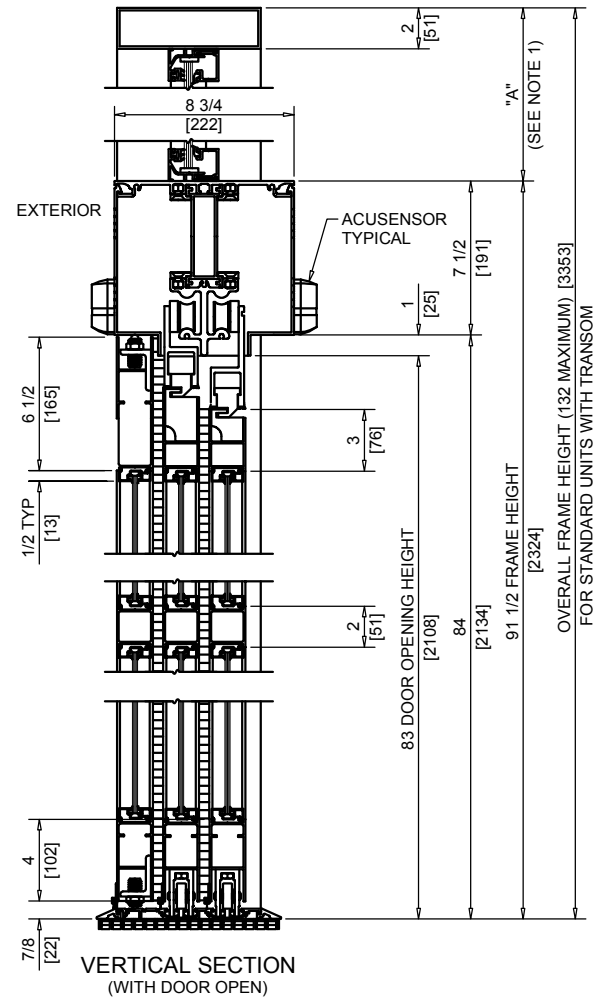
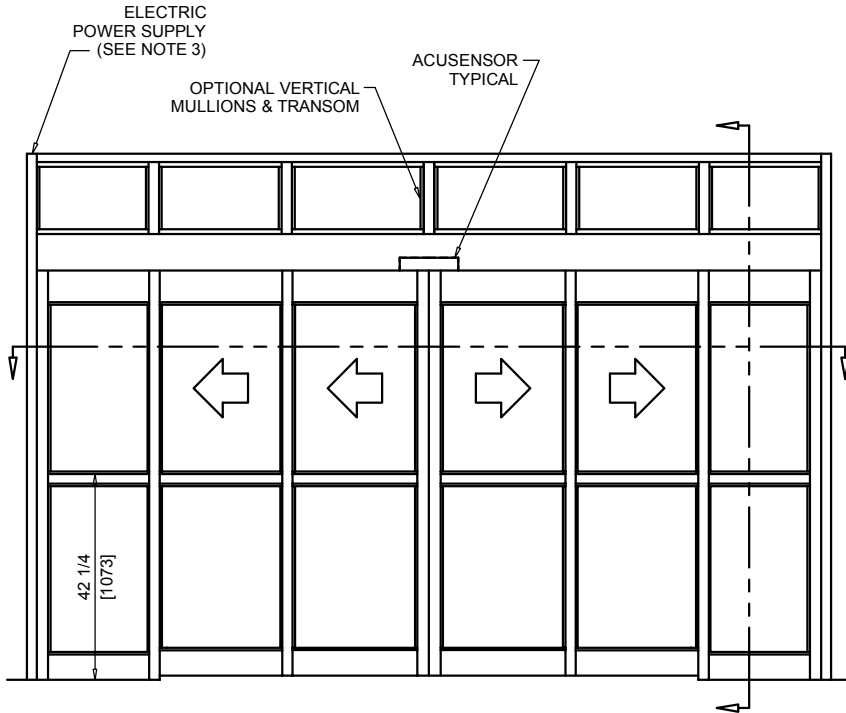




NABCO Entrances Inc.
 82 W18717 Gemini Drive Muskego, WI 53150
 www.nabcoentrances.com 1-877-622-2694

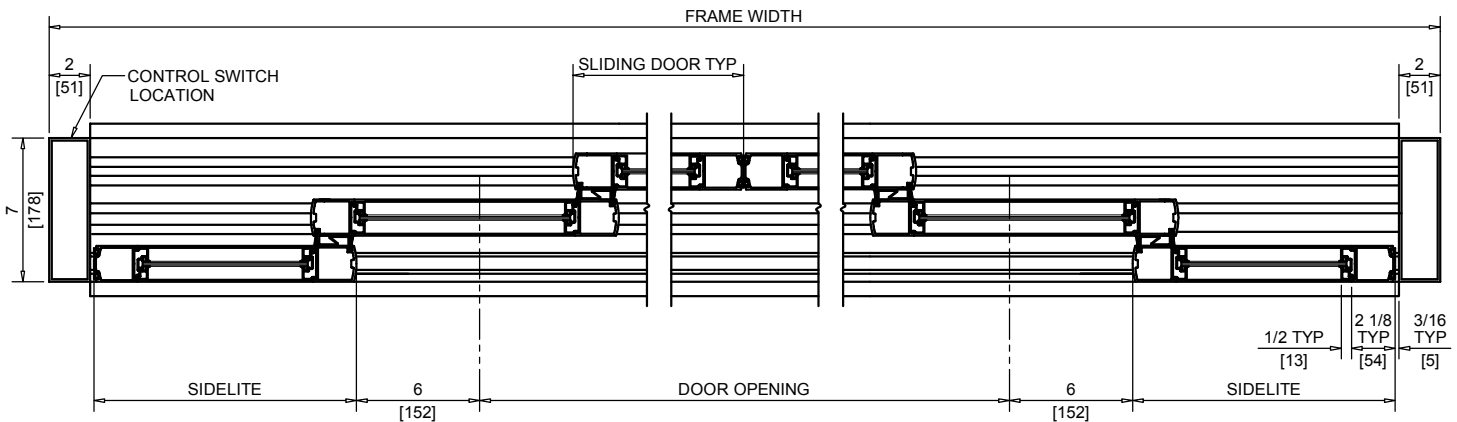
JOB NAME: _____
 LOCATION: _____
 DISTRIBUTOR: _____
 DOOR #: _____ DATE: _____
 SHEET _____ OF _____

WHISPER SLIDE
GT1175-17
 BI-PART SLIDE
 FULL OPEN
 TELESCOPING



ACCESS COVER ON BOTH SIDES
EXTERIOR ELEVATION/PLAN

VERTICAL SECTION
 (WITH DOOR OPEN)



HORIZONTAL SECTION

NOTES:

1. TRANSOM HEIGHT (DIMENSION "A") IS DETERMINED PER JOB REQUIREMENTS.
2. TRANSOM GLAZING IS SURFACE APPLIED FOR ALL GLASS THICKNESSES.
3. POWER TO HEADER WILL BE 115VAC, 5 AMP PER OPERATOR PROVIDED BY ELECTRICAL CONTRACTOR.
4. STANDARD LOCATION OF LOCK IS 35" FROM FINISH FLOOR TO CENTERLINE OF KEY CYLINDER.
5. 1/2" THRESHOLD THROUGH DOOR OPENING IS REQUIRED.
6. MASONRY OPENING EQUALS FRAME WIDTH +1/2" AND FRAME HEIGHT +1/4".
7. ONE SET OF HOLDING BEAMS AT 21" AFF STANDARD. SECOND SET AT 51" AFF IS OPTIONAL.

	DOOR OPENING	FULL BREAKOUT OPENING	FRAME WIDTH	SLIDING DOOR	SIDELITE
MIN.	48 5/8" [1235]	79 1/2" [2019]	7'-11 1/2" [2425]	17 7/16" [443]	15 1/4" [387]
MAX.	113" [2870]	176" [4470]	16'-0" [4876]	33 1/2" [851]	31 5/16" [795]