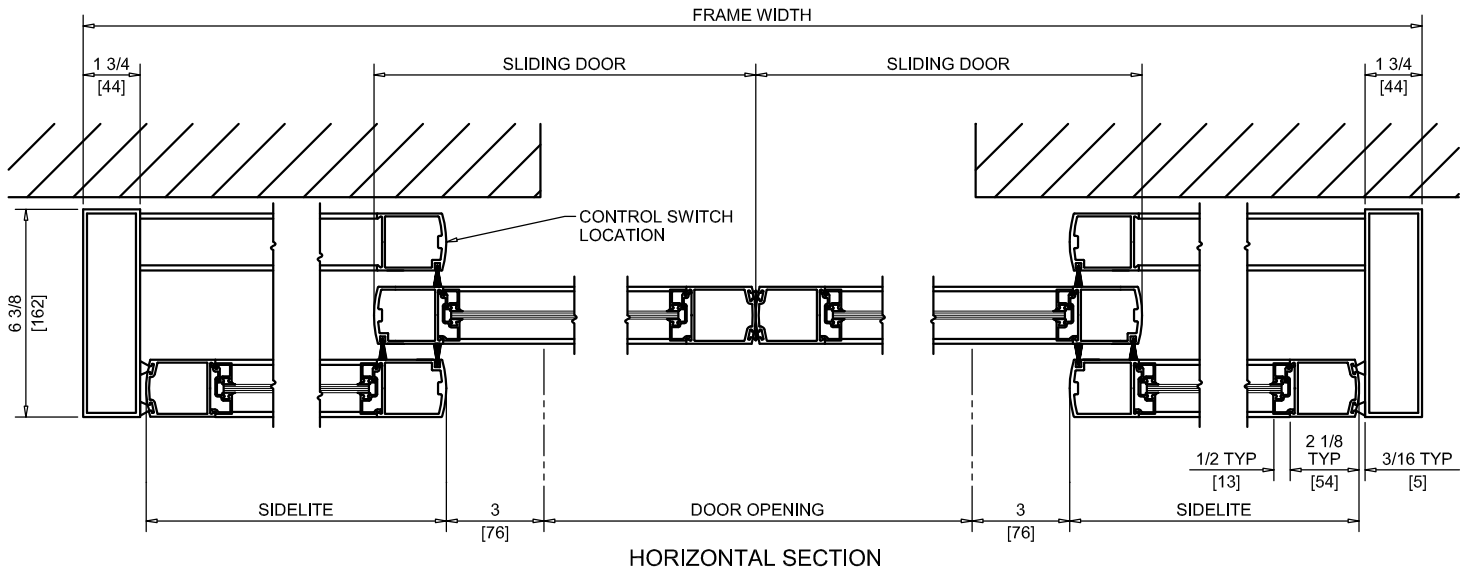
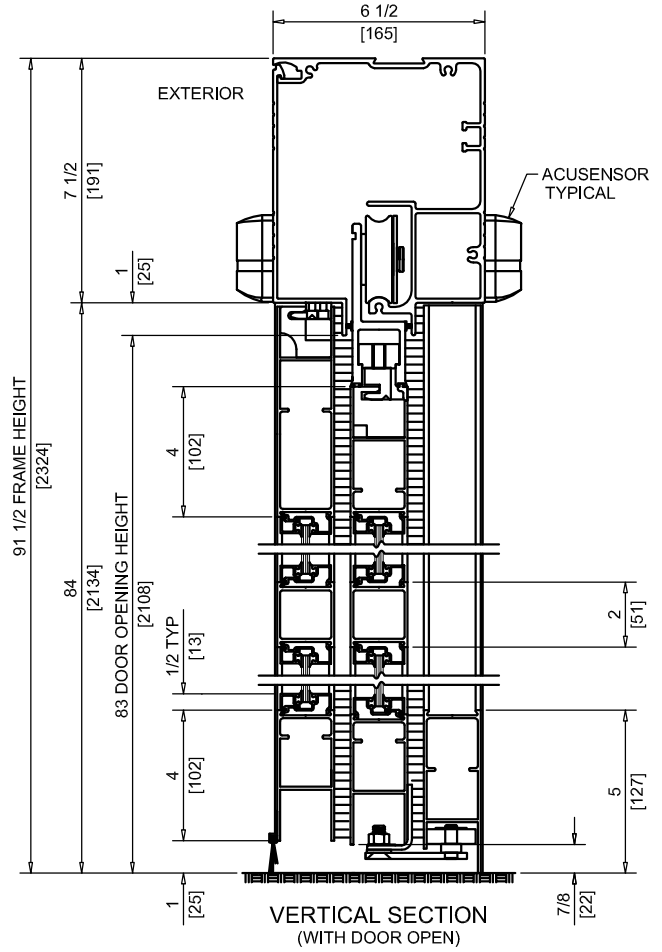
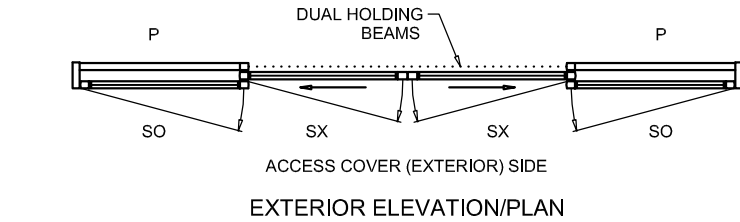
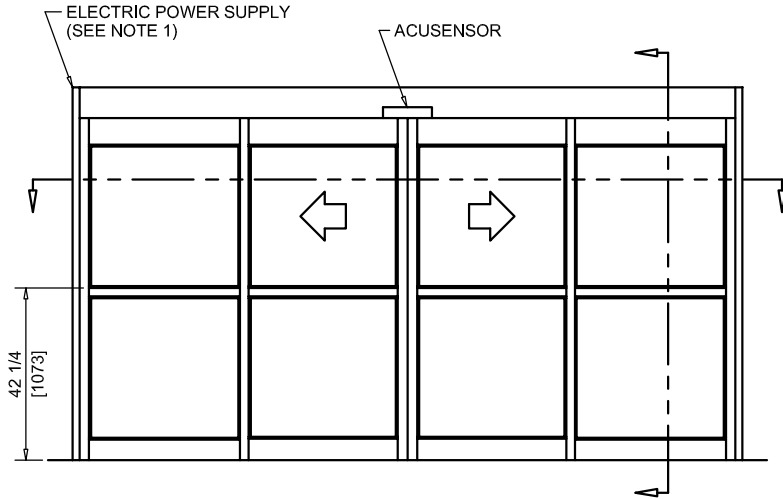




NABCO Entrances Inc.  
 582 W18717 Gemini Drive Muskego, WI 53150  
 www.nabcoentrances.com 1-877-622-2694

JOB NAME: \_\_\_\_\_  
 LOCATION: \_\_\_\_\_  
 DISTRIBUTOR: \_\_\_\_\_  
 DOOR #: \_\_\_\_\_ DATE: \_\_\_\_\_  
 SHEET \_\_\_\_\_ OF \_\_\_\_\_

**WHISPER SLIDE**  
**GT1175-10**  
 BI-PART SLIDE  
 FULL OPEN  
 SURFACE MOUNTED



| DOOR OPENING | FULL BREAKOUT OPENING | FRAME WIDTH   | SLIDING DOOR   | SIDELITE        |
|--------------|-----------------------|---------------|----------------|-----------------|
| 48" [1219]   | 54" [1371]            | 10'-0" [3048] | 29 1/4" [742]  | 31 1/16" [788]  |
| 60" [1524]   | 66" [1676]            | 12'-0" [3657] | 35 1/4" [895]  | 37 1/16" [941]  |
| 72" [1828]   | 78" [1981]            | 14'-0" [4267] | 41 1/4" [1047] | 43 1/16" [1093] |
| 84" [2133]   | 90" [2286]            | 16'-0" [4876] | 47 1/4" [1200] | 49 1/16" [1246] |
| 96" [2438]   | 102" [2590]           | 18'-0" [5486] | 53 1/4" [1352] | 55 1/16" [1398] |

NOTES:

- POWER TO HEADER WILL BE 115VAC, 5 AMP PER OPERATOR PROVIDED BY ELECTRICAL CONTRACTOR.
- ROCKER SWITCHES WILL BE MOUNTED ON NOSE OF FILLER TUBE UNLESS NOTED OTHERWISE.
- STANDARD LOCATION OF LOCK IS 35" FROM FINISH FLOOR TO CENTERLINE OF KEY CYLINDER.
- TWO SETS OF HOLDING BEAMS STANDARD. ONE SET AT 21" AFF AND ONE SET AT 51" AFF.