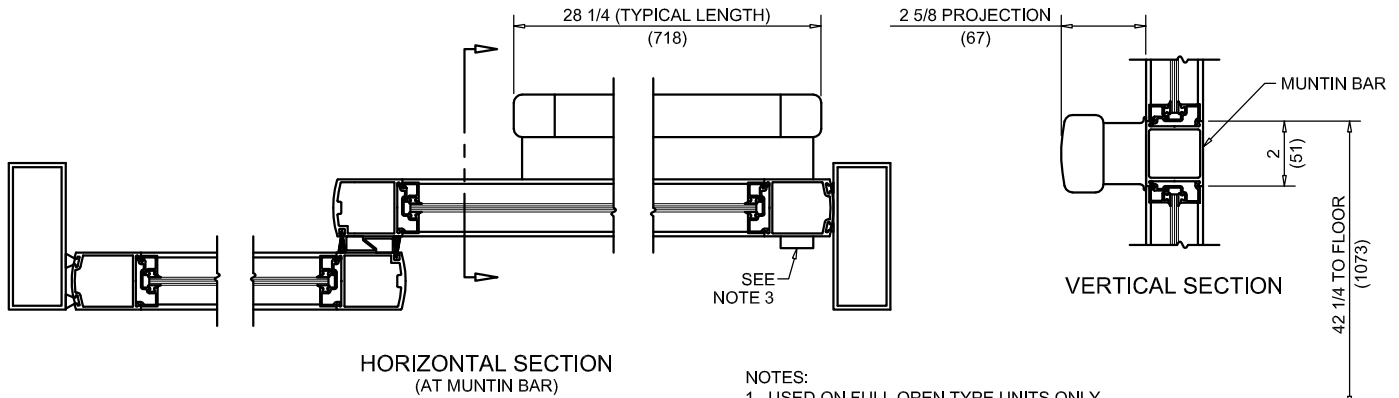




NABCO Entrances Inc.  
 S82 W18717 Gemini Drive Muskego, WI 53150  
 www.nabcoentrances.com 1-877-622-2694

JOB NAME: \_\_\_\_\_  
 LOCATION: \_\_\_\_\_  
 DISTRIBUTOR: \_\_\_\_\_  
 DOOR #: \_\_\_\_\_ DATE: \_\_\_\_\_  
 SHEET \_\_\_\_\_ OF \_\_\_\_\_

**WHISPER SLIDE  
 GT1175-11  
 PANIC EXIT  
 HARDWARE**

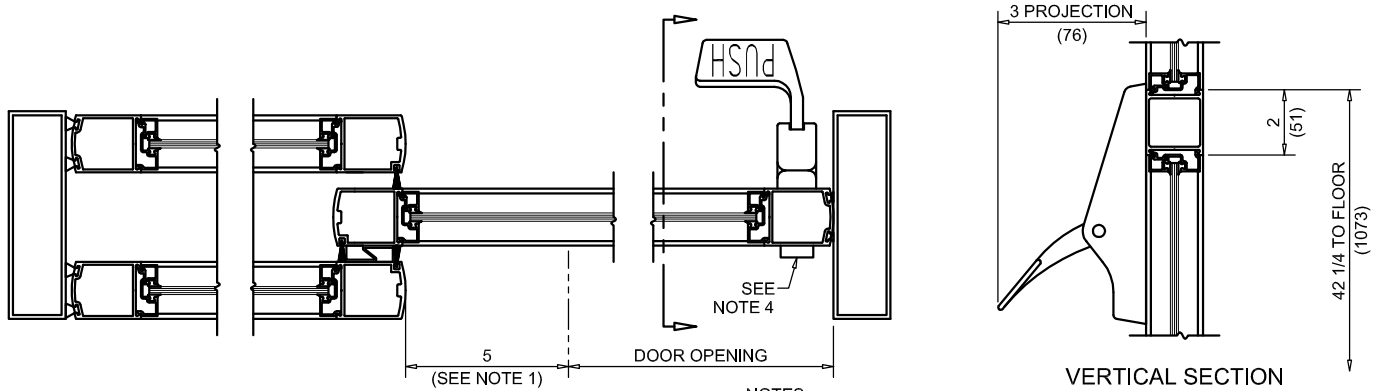


HORIZONTAL SECTION  
(AT MUNTIN BAR)

VERTICAL SECTION

G1175 SURFACE APPLIED PUSH BAR  
EXIT HARDWARE

- NOTES:  
 1. USED ON FULL OPEN TYPE UNITS ONLY.  
 2. SINGLE SLIDE UNIT SHOWN. HARDWARE CAN ALSO BE USED WITH BI-PART CONFIGURATION.  
 3. EXTERIOR CYLINDER INSTALLED ON DOOR.  
 4. 17" MINIMUM LENGTH MUNTIN BAR REQUIRED.

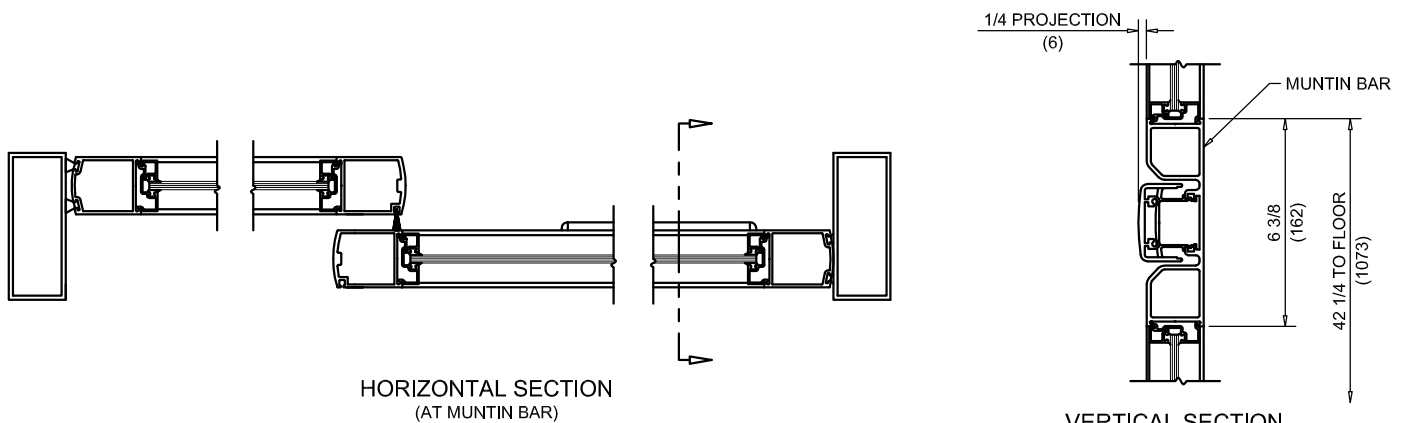


HORIZONTAL SECTION  
(AT MUNTIN BAR)

VERTICAL SECTION

G1175 PADDLE  
EXIT HARDWARE

- NOTES:  
 1. CLEARANCE REQUIRED AT DOOR FULL OPEN POSITION WITH PADDLE EXIT DEVICE INSTALLATION.  
 2. CHECK LOCAL CODES FOR PRODUCT CONFORMANCE.  
 3. SINGLE SLIDE POCKETED UNIT SHOWN. HARDWARE CAN ALSO BE USED WITH BI-PART AND FIXED OR FULL OPEN SIDELITE CONFIGURATIONS.  
 4. EXTERIOR CYLINDER INSTALLED ON DOOR.



HORIZONTAL SECTION  
(AT MUNTIN BAR)

VERTICAL SECTION

G1175 RECESSED PUSH BAR  
EXIT HARDWARE

- NOTES:  
 1. SINGLE SLIDE UNIT SHOWN. HARDWARE CAN ALSO BE USED WITH BI-PART AND FIXED OR FULL OPEN SIDELITE CONFIGURATIONS.  
 2. NOT AVAILABLE WITH EXTERIOR CYLINDER.  
 3. 25" MINIMUM LENGTH MUNTIN BAR REQUIRED.