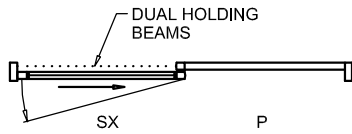
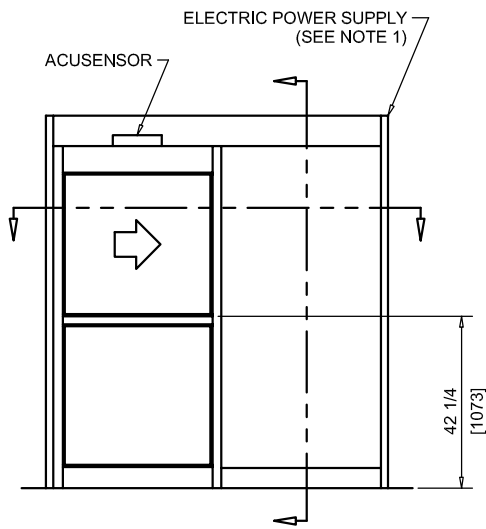




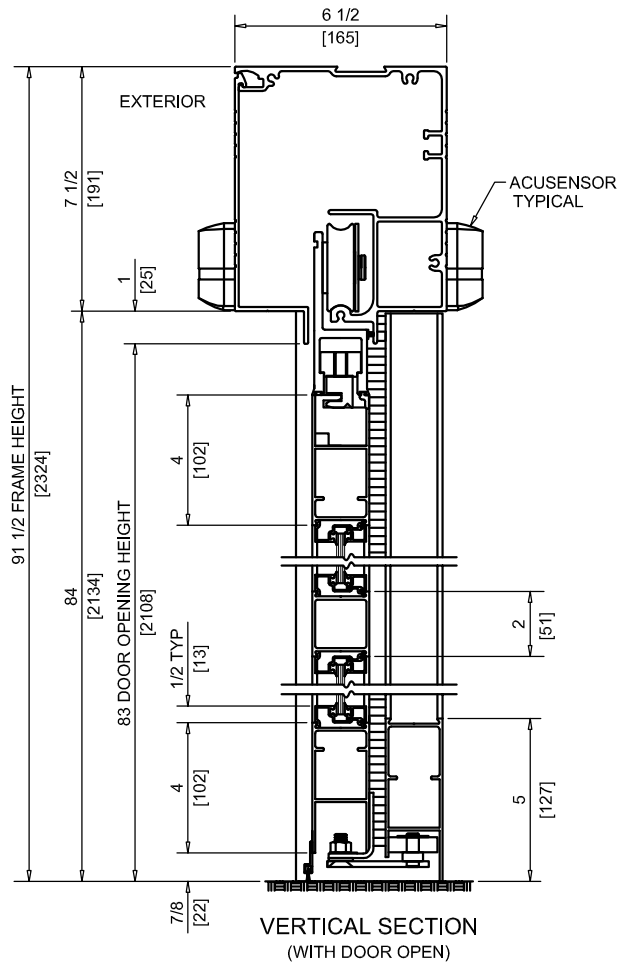
NABCO Entrances Inc.
 S82 W18717 Gemini Drive Muskego, WI 53150
 www.nabcoentrances.com 1-877-622-2694

JOB NAME: _____
 LOCATION: _____
 DISTRIBUTOR: _____
 DOOR #: _____ DATE: _____
 SHEET _____ OF _____

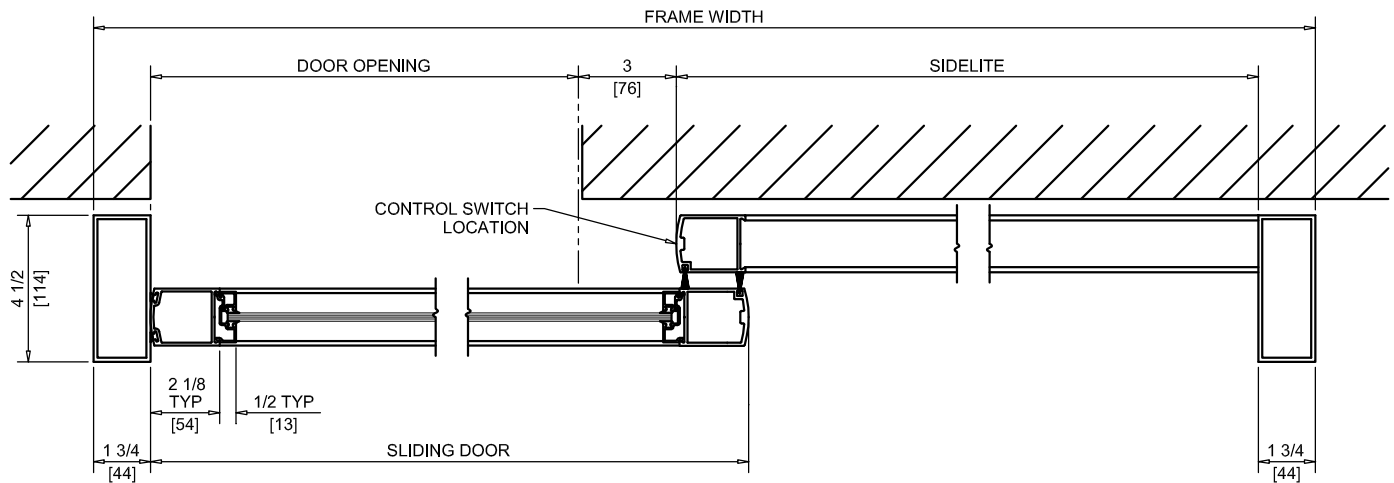
WHISPER SLIDE
GT1175-07R
 SINGLE SLIDE
 RIGHT HAND
 SURFACE MOUNTED



ACCESS COVER (EXTERIOR) SIDE
 EXTERIOR ELEVATION/PLAN



VERTICAL SECTION
 (WITH DOOR OPEN)



HORIZONTAL SECTION

DOOR OPENING	FULL BREAKOUT OPENING	FRAME WIDTH	SLIDING DOOR	SIDELITE
36" [914]	39" [990]	7'-0" [2133]	41 1/4" [1047]	41 1/2" [1054]
42" [1066]	45" [1143]	8'-0" [2438]	47 1/4" [1200]	47 1/2" [1206]
44" [1117]	47" [1193]	8'-6" [2590]	49 1/4" [1250]	51 1/2" [1308]
48" [1219]	51" [1295]	9'-0" [2743]	53 1/4" [1352]	53 1/2" [1358]

- NOTES:
- POWER TO HEADER WILL BE 115VAC, 5 AMP PER OPERATOR PROVIDED BY ELECTRICAL CONTRACTOR.
 - ROCKER SWITCHES WILL BE MOUNTED ON NOSE OF FILLER TUBE UNLESS NOTED OTHERWISE.
 - STANDARD LOCATION OF LOCK IS 35" FROM FINISH FLOOR TO CENTERLINE OF KEY CYLINDER.
 - TWO SETS OF HOLDING BEAMS STANDARD. ONE SET AT 21" AFF AND ONE SET AT 51" AFF.